

C5orf24 Antibody



PACO37442

Product Information

Size:

50ug

Reactivity:

Human, Mouse

Source:

Rabbit

Isotype:

IgG

Applications:

ELISA, WB, IHC

Recommended dilutions:

ELISA:1:2000-1:10000, WB:1:1000-1:5000,
IHC:1:20-1:200

Protein Background:

Gene ID:

C5orf24

Uniprot

Q7Z6I8

Synonyms:

UPF0461 protein C5orf24, C5orf24

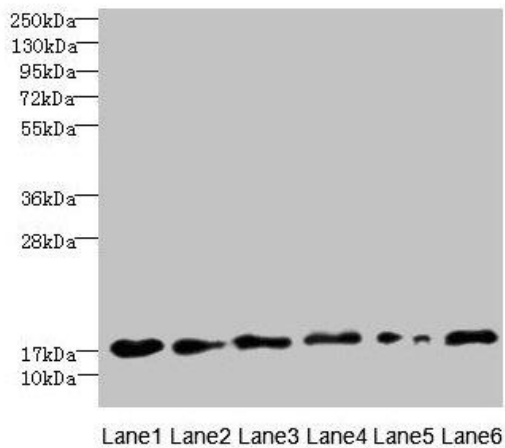
Immunogen:

Recombinant Human UPF0461 protein C5orf24 protein (7-188AA).

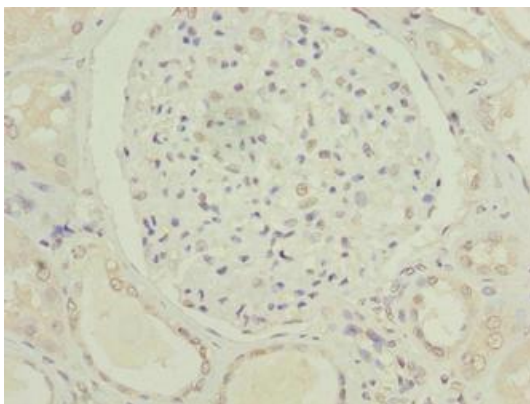
Storage:

Preservative: 0.03% Proclin 300. Constituents: 50% Glycerol, 0.01M PBS, PH 7.4

Product Images



Western blot. All lanes: C5orf24 antibody at 0.3 μ g/ml. Lane 1: Mouse gonadal tissue. Lane 2: K562 whole cell lysate. Lane 3: THP-1 whole cell lysate. Lane 4: U87 whole cell lysate. Lane 5: HepG2 whole cell lysate. Lane 6: Hela whole cell lysate. Secondary: Goat polyclonal to rabbit IgG at 1/10000 dilution. Predicted band size: 21, 17 kDa. Observed band size: 17 kDa.



Immunohistochemistry of paraffin-embedded human kidney tissue using PACO37442 at dilution of 1:100.