

# ARMC9 Antibody



PACO37430

---

## Product Information

**Size:**

50ug

**Reactivity:**

Human

**Source:**

Rabbit

**Isotype:**

IgG

**Applications:**

ELISA, WB, IHC

**Recommended dilutions:**

ELISA:1:2000-1:10000, WB:1:500-1:2000,  
IHC:1:20-1:200

**Protein Background:**

Required for ciliogenesis.

**Gene ID:**

ARMC9

**Uniprot**

Q7Z3E5

**Synonyms:**

LisH domain-containing protein ARMC9 (Armadillo repeat-containing protein 9) (Melanoma/melanocyte-specific tumor antigen KU-MEL-1) (NS21), ARMC9, KIAA1868

**Immunogen:**

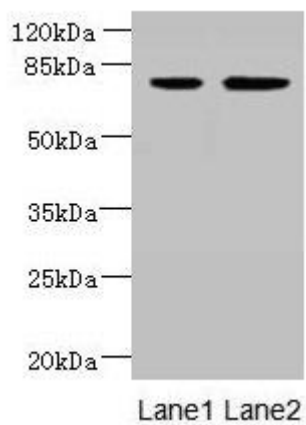
Recombinant Human LisH domain-containing protein ARMC9 protein (401-665AA).

**Storage:**

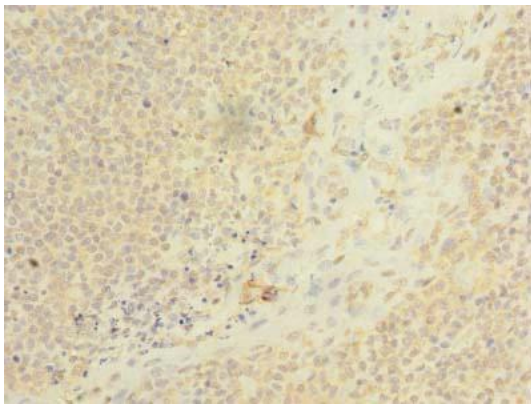
Preservative: 0.03% Proclin 300. Constituents: 50% Glycerol, 0.01M PBS, PH 7.4

## Product Images

---



Western blot. All lanes: ARM9 antibody at 6 $\mu$ g/ml. Lane 1: Jurkat whole cell lysate. Lane 2: CEM whole cell lysate. Secondary: Goat polyclonal to rabbit IgG at 1/10000 dilution. Predicted band size: 92, 76 kDa. Observed band size: 76 kDa.



Immunohistochemistry of paraffin-embedded human tonsil tissue using PACO37430 at dilution of 1:100.