

MRPL21 Antibody



PACO37426

Product Information

Size:

50ug

Reactivity:

Human

Source:

Rabbit

Isotype:

IgG

Applications:

ELISA, IHC

Recommended dilutions:

ELISA:1:2000-1:10000, IHC:1:20-1:200

Protein Background:

mitochondrial inner membrane, mitochondrial large ribosomal subunit, poly(A) RNA binding, structural constituent of ribosome, mitochondrial translation, mitochondrial translational elongation, mitochondrial translational initiation, mitochondrial translational termination, organelle organization.

Gene ID:

MRPL21

Uniprot

Q7Z2W9

Synonyms:

39S ribosomal protein L21, mitochondrial (L21mt) (MRP-L21) (Mitochondrial large ribosomal subunit protein bL21m), MRPL21

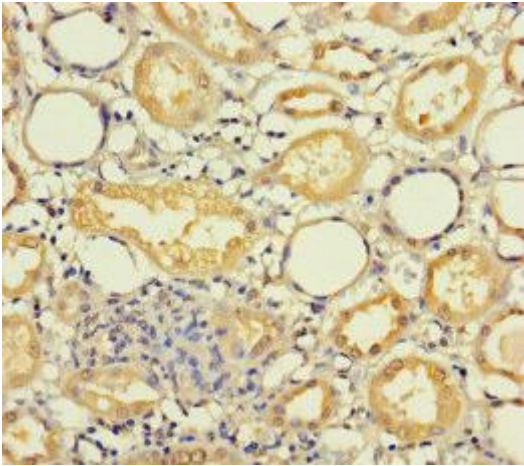
Immunogen:

Recombinant Human 39S ribosomal protein L21, mitochondrial protein (40-205AA).

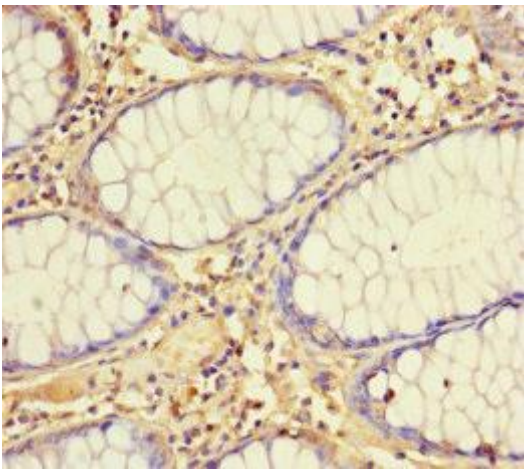
Storage:

Preservative: 0.03% Proclin 300. Constituents: 50% Glycerol, 0.01M PBS, PH 7.4

Product Images



Immunohistochemistry of paraffin-embedded human kidney tissue using PACO37426 at dilution of 1:100.



Immunohistochemistry of paraffin-embedded human colon cancer using PACO37426 at dilution of 1:100.