

TMPRSS11B Antibody



PACO37358

Product Information

Size:

50ug

Reactivity:

Human

Source:

Rabbit

Isotype:

IgG

Applications:

ELISA, IHC

Recommended dilutions:

ELISA:1:2000-1:10000, IHC:1:20-1:200

Protein Background:

Serine protease.

Gene ID:

TMPRSS11B

Uniprot

Q86T26

Synonyms:

Transmembrane protease serine 11B (EC 3.4.21. -) (Airway trypsin-like protease 5),
TMPRSS11B, HATL5

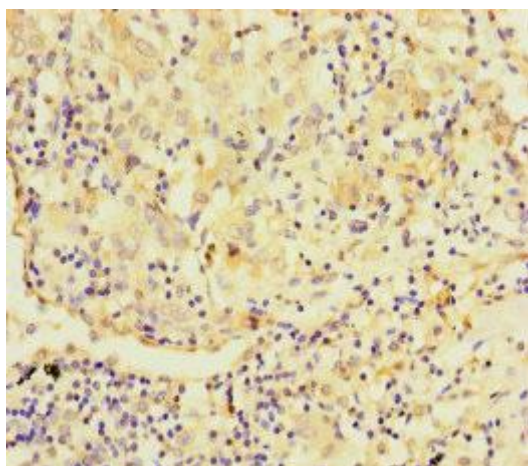
Immunogen:

Recombinant Human Transmembrane protease serine 11B protein (201-416AA).

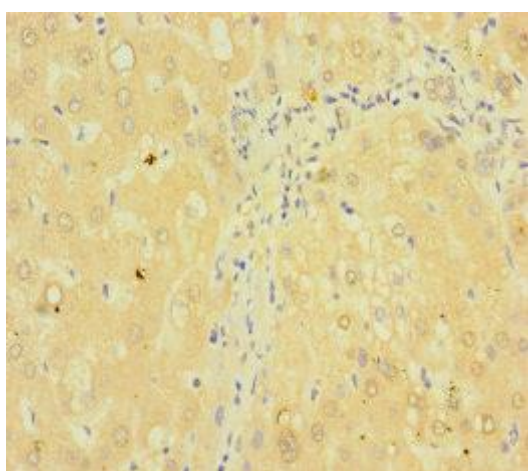
Storage:

Preservative: 0.03% Proclin 300. Constituents: 50% Glycerol, 0.01M PBS, PH 7.4

Product Images



Immunohistochemistry of paraffin-embedded human lung cancer using PACO37358 at dilution of 1:100.



Immunohistochemistry of paraffin-embedded human liver tissue using PACO37358 at dilution of 1:100.