

# KHDC4 Antibody



PACO37342

---

## Product Information

**Size:**

50ug

**Reactivity:**

Human, Mouse

**Source:**

Rabbit

**Isotype:**

IgG

**Applications:**

ELISA, WB, IHC

**Recommended dilutions:**

ELISA:1:2000-1:10000, WB:1:500-1:2000,  
IHC:1:20-1:200

**Protein Background:**

**Gene ID:**

KHDC4

**Uniprot**

Q7Z7F0

**Synonyms:**

KH homology domain-containing protein 4 (Brings lots of money 7) (Pre-mRNA splicing factor protein KHDC4), KHDC4, BLOM7 KIAA0907 SNORA80EHG

**Immunogen:**

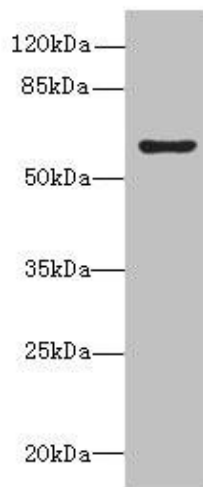
Recombinant Human KH homology domain-containing protein 4 protein (1-241AA).

**Storage:**

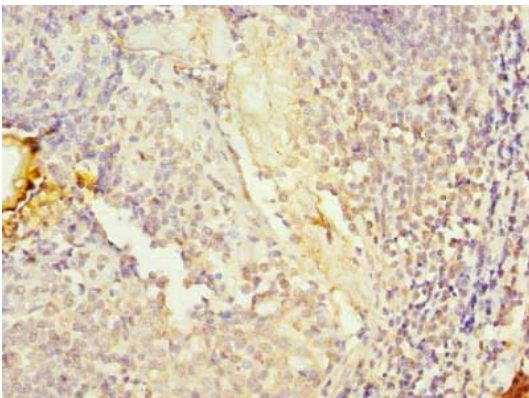
Preservative: 0.03% Proclin 300. Constituents: 50% Glycerol, 0.01M PBS, PH 7.4

## Product Images

---



Western blot. All lanes: KHDC4 antibody at 5 $\mu$ g/ml + Mouse liver tissue. Secondary. Goat polyclonal to rabbit IgG at 1/10000 dilution. Predicted band size: 65, 60, 41, 25 kDa. Observed band size: 65 kDa.



Immunohistochemistry of paraffin-embedded human tonsil tissue using PACO37342 at dilution of 1:100.