

SPATA19 Antibody



PACO37338

Product Information

Size:

50ug

Reactivity:

Human, Mouse

Source:

Rabbit

Isotype:

IgG

Applications:

ELISA, WB

Recommended dilutions:

ELISA:1:2000-1:10000, WB:1:1000-1:5000

Protein Background:

May have a role in spermiogenesis.

Gene ID:

SPATA19

Uniprot

Q7Z5L4

Synonyms:

Spermatogenesis-associated protein 19, mitochondrial (Spermatogenic cell-specific gene 1 protein) (Spergen-1), SPATA19, SPERGEN1

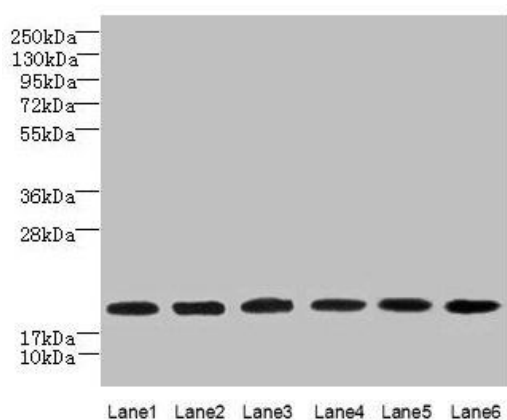
Immunogen:

Recombinant Human Spermatogenesis-associated protein 19, mitochondrial protein (25-167AA).

Storage:

Preservative: 0.03% Proclin 300. Constituents: 50% Glycerol, 0.01M PBS, PH 7.4

Product Images



Western blot. All lanes: SPATA19 antibody at 1 μ g/ml. Lane 1: MCF-7 whole cell lysate. Lane 2: HeLa whole cell lysate. Lane 3: HepG2 whole cell lysate. Lane 4: MDA-MB-231 whole cell lysate. Lane 5: A549 whole cell lysate. Lane 6: Mouse liver tissue. Secondary. Goat polyclonal to rabbit IgG at 1/10000 dilution. Predicted band size: 20 kDa. Observed band size: 20 kDa.