

# HSD11B1L Antibody



PACO37334

---

## Product Information

**Size:**

50ug

**Reactivity:**

Human

**Source:**

Rabbit

**Isotype:**

IgG

**Applications:**

ELISA, IHC

**Recommended dilutions:**

ELISA:1:2000-1:10000, IHC:1:20-1:200

**Protein Background:**

**Gene ID:**

HSD11B1L

**Uniprot**

Q7Z5J1

**Synonyms:**

Hydroxysteroid 11-beta-dehydrogenase 1-like protein (EC 1.1.1. -) (11-beta-hydroxysteroid dehydrogenase type 3) (11-DH3) (11-beta-HSD3) (Short chain dehydrogenase/reductase family 26C member 2) (Short-chain dehydrogenase/reductase 10), HSD11B1L, HSD3 SCDR10 SDR26C2

**Immunogen:**

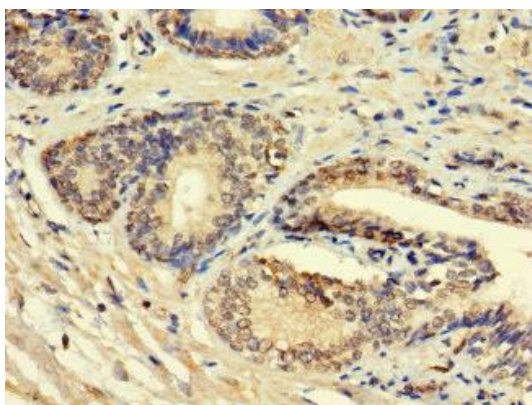
Recombinant Human Hydroxysteroid 11-beta-dehydrogenase 1-like protein (17-87AA).

**Storage:**

Preservative: 0.03% Proclin 300. Constituents: 50% Glycerol, 0.01M PBS, PH 7.4

## Product Images

---



Immunohistochemistry of paraffin-embedded human prostate cancer using PACO37334 at dilution of 1:100.