

# OOSP2 Antibody



PACO37310

---

## Product Information

**Size:**

50ug

**Reactivity:**

Human

**Source:**

Rabbit

**Isotype:**

IgG

**Applications:**

ELISA, IHC

**Recommended dilutions:**

ELISA:1:2000-1:10000, IHC:1:20-1:200

**Protein Background:**

**Gene ID:**

OOSP2

**Uniprot**

Q86WS3

**Synonyms:**

Oocyte-secreted protein 2 (Placenta-specific 1-like protein) (Protein TMEM122), OOSP2, PLAC1L TMEM122

**Immunogen:**

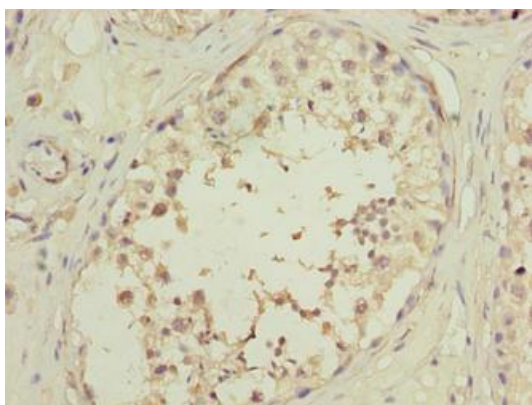
Recombinant Human Oocyte-secreted protein 2 protein (74-158AA).

**Storage:**

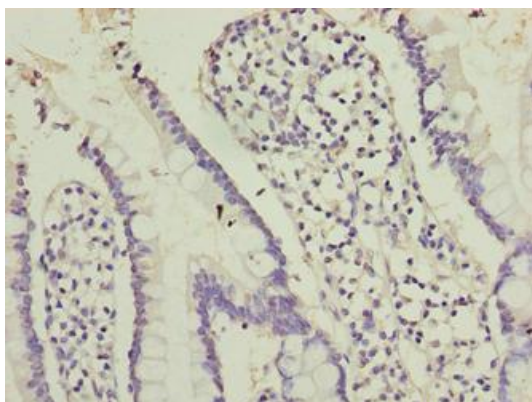
Preservative: 0.03% Proclin 300. Constituents: 50% Glycerol, 0.01M PBS, PH 7.4

## Product Images

---



Immunohistochemistry of paraffin-embedded human testis tissue using PACO37310 at dilution of 1:100.



Immunohistochemistry of paraffin-embedded human small intestine tissue using PACO37310 at dilution of 1:100.