

LCA5 Antibody



PACO37306

Product Information

Size:

50ug

Reactivity:

Human, Mouse

Source:

Rabbit

Isotype:

IgG

Applications:

ELISA, WB

Recommended dilutions:

ELISA:1:2000-1:10000, WB:1:1000-1:5000

Protein Background:

Might be involved in minus end-directed microtubule transport.

Gene ID:

LCA5

Uniprot

Q86VQ0

Synonyms:

Lebercilin (Leber congenital amaurosis 5 protein), LCA5, C6orf152

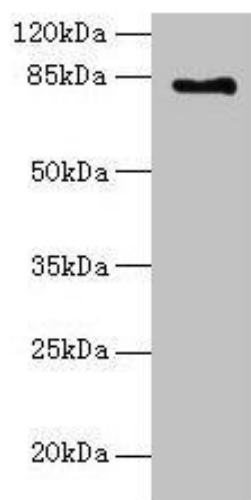
Immunogen:

Recombinant Human Lebercilin protein (101-400AA).

Storage:

Preservative: 0.03% Proclin 300. Constituents: 50% Glycerol, 0.01M PBS, PH 7.4

Product Images



Western blot. All lanes: LCA5 antibody at 18 μ g/ml + Mouse kidney tissue. Secondary. Goat polyclonal to rabbit IgG at 1/10000 dilution. Predicted band size: 81 kDa. Observed band size: 81 kDa.