

PACO37290

Product Information

Size:

50ug

Reactivity:

Human

Source:

Rabbit

Isotype:

IgG

Applications:

ELISA, WB, IHC

Recommended dilutions:

ELISA:1:2000-1:10000, WB:1:1000-1:5000,
IHC:1:20-1:200

Protein Background:

Involved in the maturation of mitochondrial 4Fe-4S proteins functioning late in the iron-sulfur cluster assembly pathway. May be involved in the binding of an intermediate of Fe/S cluster assembly.

Gene ID:

ISCA2

Uniprot

Q86U28

Synonyms:

Iron-sulfur cluster assembly 2 homolog, mitochondrial (HESB-like domain-containing protein 1), ISCA2, HBLD1

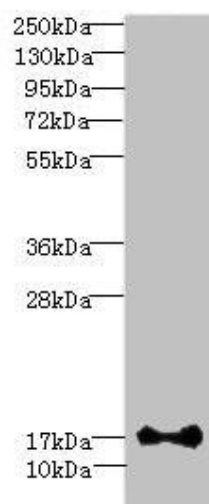
Immunogen:

Recombinant Human Iron-sulfur cluster assembly 2 homolog, mitochondrial protein (9-154AA).

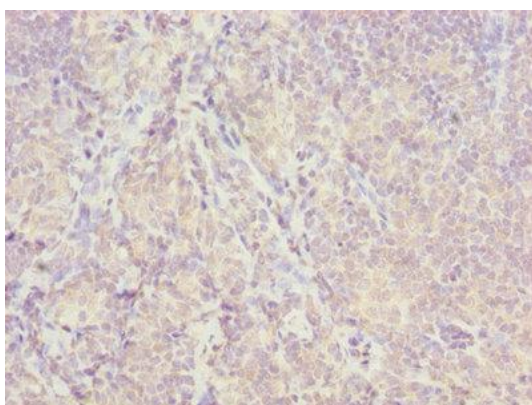
Storage:

Preservative: 0.03% Proclin 300. Constituents: 50% Glycerol, 0.01M PBS, PH 7.4

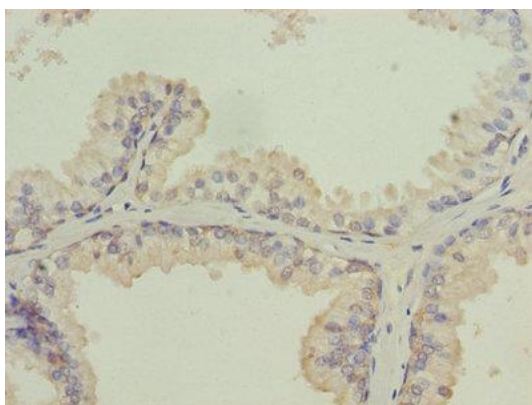
Product Images



Western blot. All lanes: ISCA2 antibody at 0.4 μ g/ml + HL60 whole cell lysate. Secondary. Goat polyclonal to rabbit IgG at 1/10000 dilution. Predicted band size: 17, 7 kDa. Observed band size: 17 kDa.



Immunohistochemistry of paraffin-embedded human tonsil tissue using PACO37290 at dilution of 1:100.



Immunohistochemistry of paraffin-embedded human prostate cancer using PACO37290 at dilution of 1:100.