

LYSMD3 Antibody



PACO37270

Product Information

Size:

50ug

Reactivity:

Human, Mouse

Source:

Rabbit

Isotype:

IgG

Applications:

ELISA, WB

Recommended dilutions:

ELISA:1:2000-1:10000, WB:1:1000-1:5000

Protein Background:

Gene ID:

LYSMD3

Uniprot

Q7Z3D4

Synonyms:

LysM and putative peptidoglycan-binding domain-containing protein 3, LYSMD3

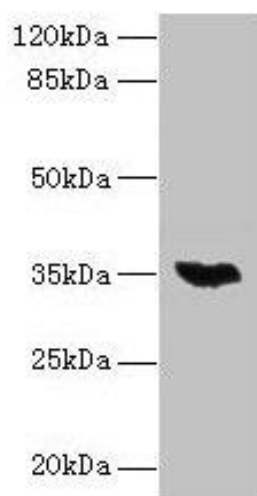
Immunogen:

Recombinant Human LysM and putative peptidoglycan-binding domain-containing protein 3 protein (1-127AA).

Storage:

Preservative: 0.03% Proclin 300. Constituents: 50% Glycerol, 0.01M PBS, PH 7.4

Product Images



Western blot. All lanes: LYSMD3 antibody at 6 μ g/ml + Mouse heart tissue. Secondary. Goat polyclonal to rabbit IgG at 1/10000 dilution. Predicted band size: 35, 15, 18 kDa. Observed band size: 35 kDa.