

# CALHM3 Antibody



PACO37250

---

## Product Information

**Size:**

50ug

**Reactivity:**

Human, Mouse

**Source:**

Rabbit

**Isotype:**

IgG

**Applications:**

ELISA, WB, IHC, IF

**Recommended dilutions:**

ELISA:1:2000-1:10000, WB:1:1000-1:5000,  
IHC:1:20-1:200, IF:1:50-1:200

**Protein Background:**

Pore-forming subunit of a voltage-gated ion channel.

**Gene ID:**

CALHM3

**Uniprot**

Q86XJ0

**Synonyms:**

Calcium homeostasis modulator protein 3 (Protein FAM26A), CALHM3, FAM26A

**Immunogen:**

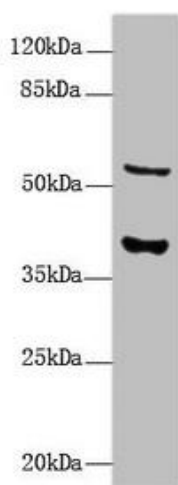
Recombinant Human Calcium homeostasis modulator protein 3 protein (201-350AA).

**Storage:**

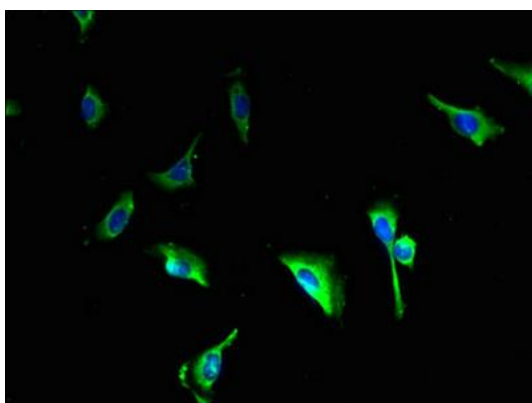
Preservative: 0.03% Proclin 300. Constituents: 50% Glycerol, 0.01M PBS, PH 7.4

## Product Images

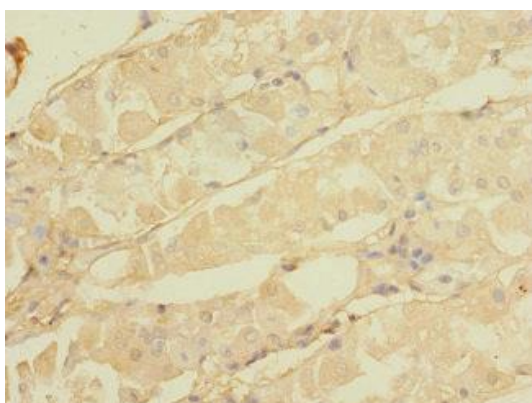
---



Western Blot. All lanes: CALHM3 antibody at 8 $\mu$ g/ml + Mouse kidney tissue. Secondary. Goat polyclonal to rabbit IgG at 1/10000 dilution. Predicted band size: 40, 39 kDa. Observed band size: 40, 55 kDa.



Immunofluorescent analysis of U251 cells using PACO37250 at dilution of 1:100 and Alexa Fluor 488-conjugated AffiniPure Goat Anti-Rabbit IgG(H+L).



Immunohistochemistry of paraffin-embedded human gastric cancer using PACO37250 at dilution of 1:100.