

# TADA2B Antibody



PACO37230

---

## Product Information

**Size:**

50ug

**Reactivity:**

Human

**Source:**

Rabbit

**Isotype:**

IgG

**Applications:**

ELISA, IHC

**Recommended dilutions:**

ELISA:1:2000-1:10000, IHC:1:20-1:200

**Protein Background:**

Coactivates PAX5-dependent transcription together with either SMARCA4 or GCN5L2.

**Gene ID:**

TADA2B

**Uniprot**

Q86TJ2

**Synonyms:**

Transcriptional adapter 2-beta (ADA2-like protein beta) (ADA2-beta), TADA2B, ADA2B

**Immunogen:**

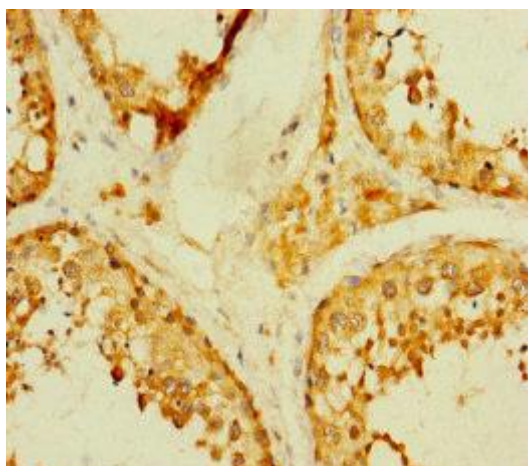
Recombinant Human Transcriptional adapter 2-&beta; protein (29-328AA).

**Storage:**

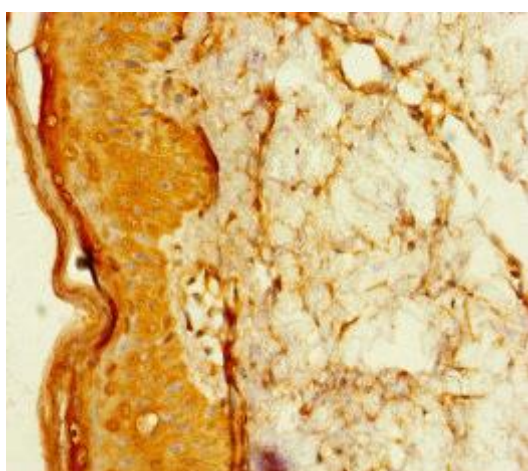
Preservative: 0.03% Proclin 300. Constituents: 50% Glycerol, 0.01M PBS, PH 7.4

## Product Images

---



Immunohistochemistry of paraffin-embedded human testis tissue using PACO37230 at dilution of 1:100.



Immunohistochemistry of paraffin-embedded human skin tissue using PACO37230 at dilution of 1:100.