

# ARMCX6 Antibody



PACO37206

---

## Product Information

**Size:**

50ug

**Reactivity:**

Human

**Source:**

Rabbit

**Isotype:**

IgG

**Applications:**

ELISA, WB, IHC

**Recommended dilutions:**

ELISA:1:2000-1:10000, WB:1:500-1:2000,  
IHC:1:20-1:200

**Protein Background:****Gene ID:**

ARMCX6

**Uniprot**

Q7L4S7

**Synonyms:**

Protein ARMCX6, ARMCX6

**Immunogen:**

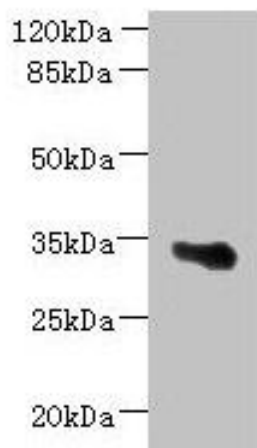
Recombinant Human Protein ARMCX6 protein (28-300AA).

**Storage:**

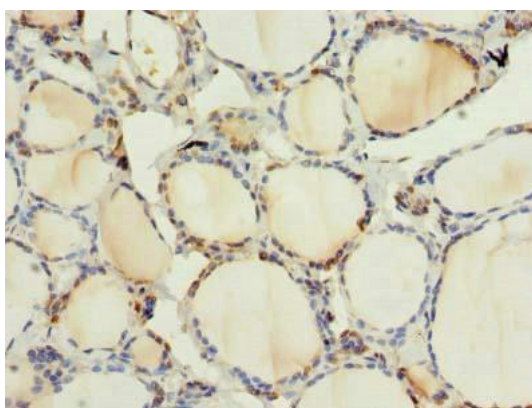
Preservative: 0.03% Proclin 300. Constituents: 50% Glycerol, 0.01M PBS, PH 7.4

## Product Images

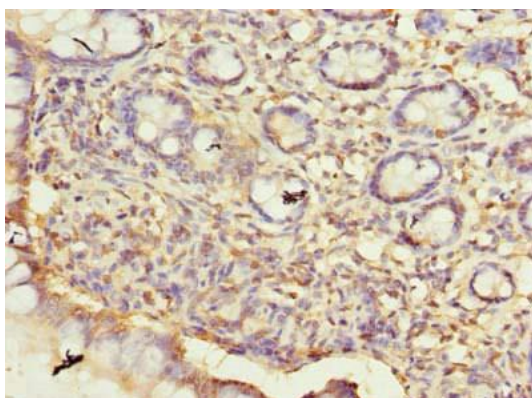
---



Western blot. All lanes: ARM CX6 antibody at 1.3 $\mu$ g/ml + U251 whole cell lysate. Secondary. Goat polyclonal to rabbit IgG at 1/10000 dilution. Predicted band size: 34 kDa. Observed band size: 34 kDa.



Immunohistochemistry of paraffin-embedded human thyroid tissue using PACO37206 at dilution of 1:100.



Immunohistochemistry of paraffin-embedded human small intestine tissue using PACO37206 at dilution of 1:100.