

PACO37130

Product Information

Size:

50ug

Reactivity:

Human, Mouse

Source:

Rabbit

Isotype:

IgG

Applications:

ELISA, WB

Recommended dilutions:

ELISA:1:2000-1:10000, WB:1:1000-1:5000

Protein Background:

Hydrolyzes N-acyl-phosphatidylethanolamines (NAPEs) to produce N-acylethanolamines (NAEs) and phosphatidic acid, Responsible for the generation of anandamide (N-arachidonylethanolamine), the ligand of cannabinoid and vanilloid receptors.

Gene ID:

NAPEPLD

Uniprot

Q6IQ20

Synonyms:

N-acyl-phosphatidylethanolamine-hydrolyzing phospholipase D (N-acyl phosphatidylethanolamine phospholipase D) (NAPE-PLD) (NAPE-hydrolyzing phospholipase D) (EC 3.1.4.54), NAPEPLD, C7orf18

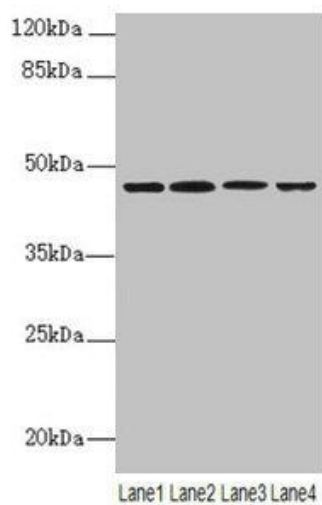
Immunogen:

Recombinant Human N-acyl-phosphatidylethanolamine-hydrolyzing phospholipase D protein (1-200AA).

Storage:

Preservative: 0.03% Proclin 300. Constituents: 50% Glycerol, 0.01M PBS, PH 7.4

Product Images



Western blot. All lanes: NAPEPLD antibody at 6 μ g/ml. Lane 1: Mouse large intestine tissue. Lane 2: Mouse kidney tissue. Lane 3: Mouse stomach tissue. Lane 4: MCF-7 whole cell lysate. Secondary. Goat polyclonal to rabbit IgG at 1/10000 dilution. Predicted band size: 46 kDa. Observed band size: 46 kDa.