

Product Information

Size:

50ug

Reactivity:

Human

Source:

Rabbit

Isotype:

IgG

Applications:

ELISA, WB, IHC

Recommended dilutions:

ELISA:1:2000-1:10000, WB:1:500-1:5000,
IHC:1:20-1:200

Protein Background:

May activate CDC42, a member of the Ras-like family of Rho- and Rac proteins, by exchanging bound GDP for free GTP. May play a role in regulating the actin cytoskeleton and cell shape.

Gene ID:

FGD6

Uniprot

Q6ZV73

Synonyms:

FYVE, RhoGEF and PH domain-containing protein 6 (Zinc finger FYVE domain-containing protein 24), FGD6, KIAA1362 ZFYVE24

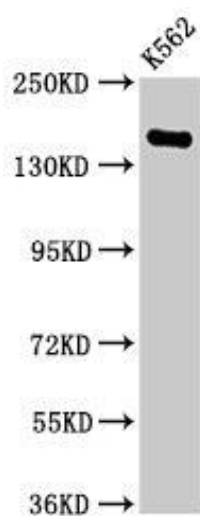
Immunogen:

Recombinant Human FYVE, RhoGEF and PH domain-containing protein 6 protein (1138-1352AA).

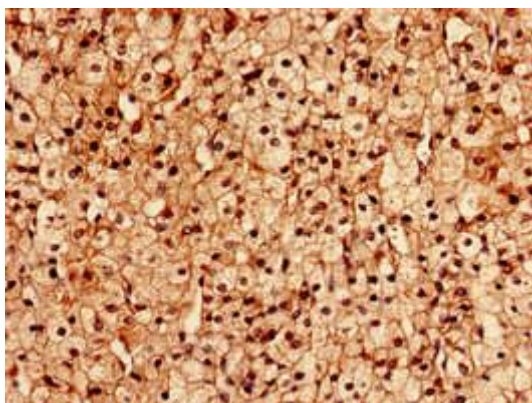
Storage:

Preservative: 0.03% Proclin 300. Constituents: 50% Glycerol, 0.01M PBS, PH 7.4

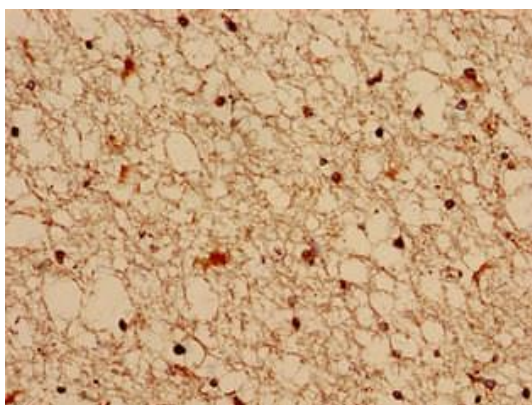
Product Images



Western Blot. Positive WB detected in: K562 whole cell lysate. All lanes: FGD6 antibody at 2.8 μ g/ml. Secondary. Goat polyclonal to rabbit IgG at 1/50000 dilution. Predicted band size: 161, 155 kDa. Observed band size: 161 kDa.



Immunocytochemistry analysis of human adrenal gland tissue using PACO37114 at dilution of 1:100.



Immunocytochemistry analysis of human brain tissue using PACO37114 at dilution of 1:100.