

## Product Information

**Size:**

50ug

**Reactivity:**

Human

**Source:**

Rabbit

**Isotype:**

IgG

**Applications:**

ELISA, IHC, IF

**Recommended dilutions:**

ELISA:1:2000-1:10000, IHC:1:20-1:200,  
IF:1:50-1:200

**Protein Background:**

May act as a redox regulator involved in DUOX proteins folding. The interaction with DUOX1 and DUOX2 suggest that it belongs to a multiprotein complex constituting the thyroid H<sub>2</sub>O<sub>2</sub> generating system. It is however not sufficient to assist DUOX1 and DUOX2 in H<sub>2</sub>O<sub>2</sub> generation.

**Gene ID:**

TXNDC11

**Uniprot**

Q6PKC3

**Synonyms:**

Thioredoxin domain-containing protein 11 (EF-hand-binding protein 1), TXNDC11, EFP1

**Immunogen:**

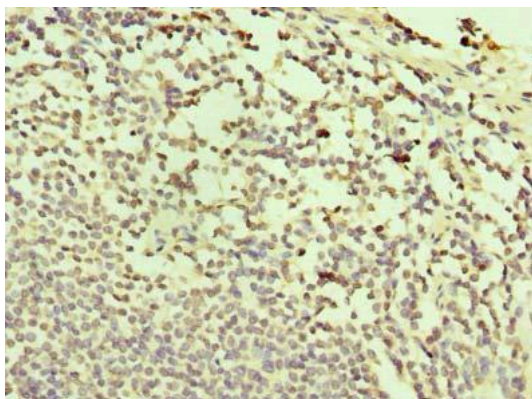
Recombinant Human Thioredoxin domain-containing protein 11 protein (656-985AA).

**Storage:**

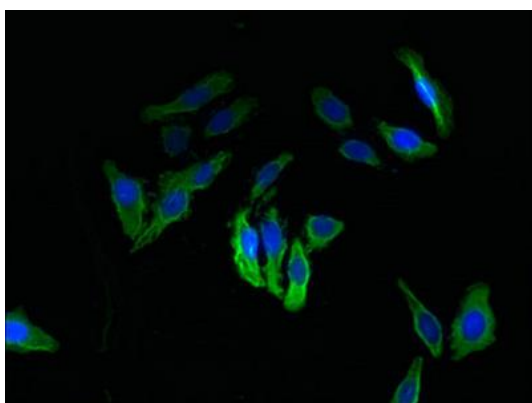
Preservative: 0.03% Proclin 300. Constituents: 50% Glycerol, 0.01M PBS, PH 7.4

## Product Images

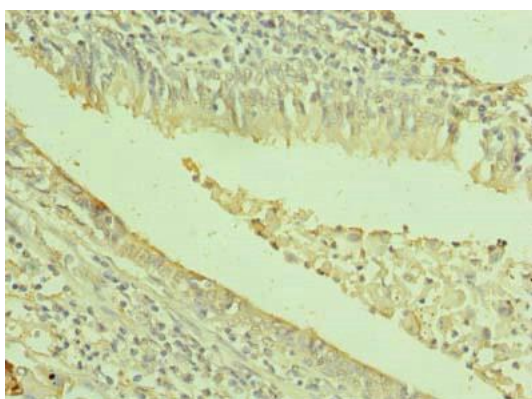
---



Immunohistochemistry of paraffin-embedded human small intestine tissue using PACO37078 at dilution of 1:100.



Immunofluorescent analysis of HepG2 cells using PACO37078 at dilution of 1:100 and Alexa Fluor 488-conjugated AffiniPure Goat Anti-Rabbit IgG(H+L).



Immunohistochemistry of paraffin-embedded human lung cancer using PACO37078 at dilution of 1:100.