

Product Information

Size:

50ug

Reactivity:

Human, Mouse

Source:

Rabbit

Isotype:

IgG

Applications:

ELISA, WB, IHC, IF

Recommended dilutions:

ELISA:1:2000-1:10000, WB:1:500-1:2000,
IHC:1:20-1:200, IF:1:50-1:200

Protein Background:

Calcium-dependent mitochondrial solute carrier. Mitochondrial solute carriers shuttle metabolites, nucleotides, and cofactors through the mitochondrial inner membrane. May act as a ATP-Mg/Pi exchanger that mediates the transport of Mg-ATP in exchange for phosphate, catalyzing the net uptake or efflux of adenine nucleotides into or from the mitochondria.

Gene ID:

SLC25A25

Uniprot

Q6KCM7

Synonyms:

Calcium-binding mitochondrial carrier protein SCaMC-2 (Mitochondrial ATP-Mg/Pi carrier protein 3) (Mitochondrial Ca²⁺-dependent solute carrier protein 3) (Small calcium-binding mitochondrial carrier protein 2) (Solute carrier family 25 member 25), SLC25A25, APC3 KIAA1896 MCSC3 SCAMC2

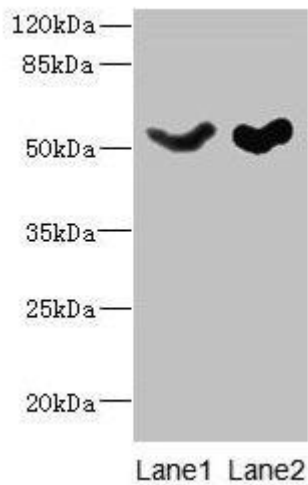
Immunogen:

Recombinant Human Calcium-binding mitochondrial carrier protein SCaMC-2 protein (1-189AA).

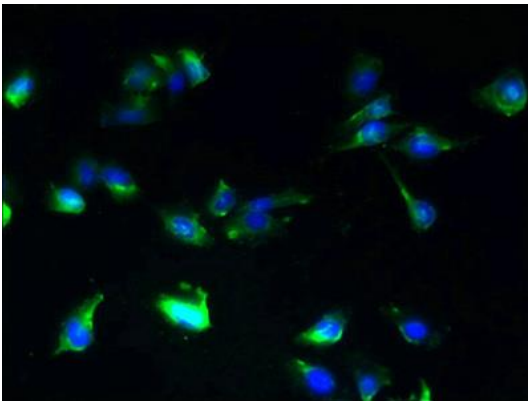
Storage:

Preservative: 0.03% Proclin 300. Constituents: 50% Glycerol, 0.01M PBS, PH 7.4

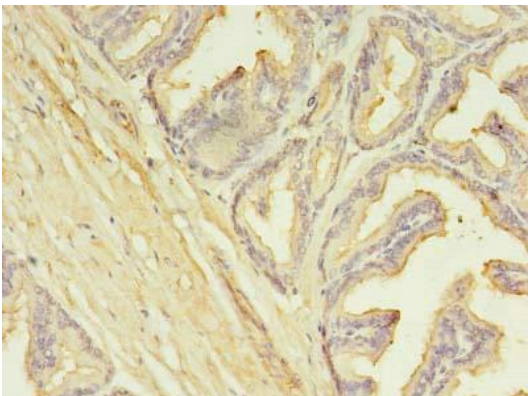
Product Images



Western blot. All lanes: SLC25A25 antibody at 10 μ g/ml. Lane 1: Mouse liver tissue. Lane 2: Mouse brain tissue. Secondary: Goat polyclonal to rabbit IgG at 1/10000 dilution. Predicted band size: 53, 56, 57, 55, 41 kDa. Observed band size: 53 kDa.



Immunofluorescent analysis of U251 cells using PACO37066 at dilution of 1:100 and Alexa Fluor 488-conjugated AffiniPure Goat Anti-Rabbit IgG(H+L).



Immunohistochemistry of paraffin-embedded human prostate cancer using PACO37066 at dilution of 1:100.