

ASPHD2 Antibody



PACO37058

Product Information

Size:

50ug

Reactivity:

Human

Source:

Rabbit

Isotype:

IgG

Applications:

ELISA, WB

Recommended dilutions:

ELISA:1:2000-1:10000, WB:1:500-1:2000

Protein Background:

May function as 2-oxoglutarate-dependent dioxygenase.

Gene ID:

ASPHD2

Uniprot

Q6ICH7

Synonyms:

Aspartate beta-hydroxylase domain-containing protein 2 (EC 1.14.11. -), ASPHD2

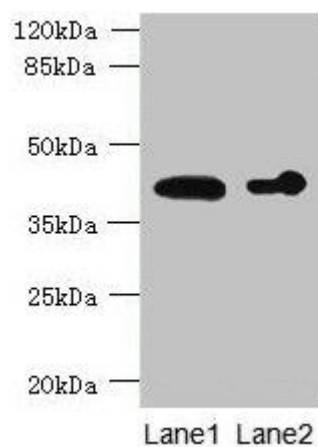
Immunogen:

Recombinant Human Aspartate beta-hydroxylase domain-containing protein 2 protein (80-369AA).

Storage:

Preservative: 0.03% Proclin 300. Constituents: 50% Glycerol, 0.01M PBS, PH 7.4

Product Images



Western blot. All lanes: ASPHD2 antibody at 4 μ g/ml. Lane 1: HeLa whole cell lysate. Lane 2: HL60 whole cell lysate. Secondary: Goat polyclonal to rabbit IgG at 1/10000 dilution. Predicted band size: 42 kDa. Observed band size: 42 kDa.