

EPM2AIP1 Antibody



PACO37046

Product Information

Size:

50ug

Reactivity:

Human

Source:

Rabbit

Isotype:

IgG

Applications:

ELISA, IHC

Recommended dilutions:

ELISA:1:2000-1:10000, IHC:1:20-1:200

Protein Background:**Gene ID:**

EPM2AIP1

Uniprot

Q7L775

Synonyms:

EPM2A-interacting protein 1 (Laforin-interacting protein), EPM2AIP1, KIAA0766

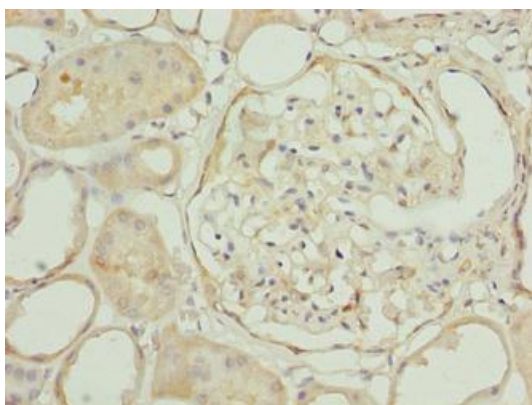
Immunogen:

Recombinant Human EPM2A-interacting protein 1 protein (251-607AA).

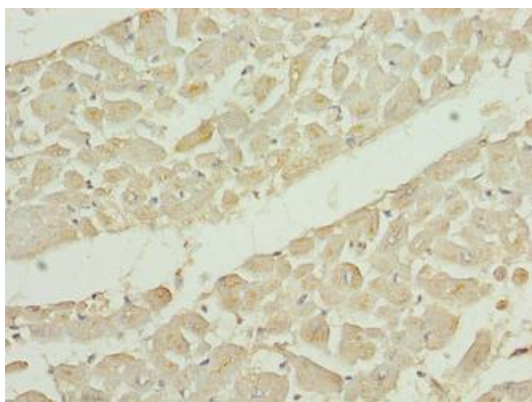
Storage:

Preservative: 0.03% Proclin 300. Constituents: 50% Glycerol, 0.01M PBS, PH 7.4

Product Images



Immunohistochemistry of paraffin-embedded human kidney tissue using PACO37046 at dilution of 1:100.



Immunohistochemistry of paraffin-embedded human heart tissue using PACO37046 at dilution of 1:100.