

CFAP65 Antibody



PACO37034

Product Information

Size:

50ug

Reactivity:

Human

Source:

Rabbit

Isotype:

IgG

Applications:

ELISA, WB, IHC, IF

Recommended dilutions:

ELISA:1:2000-1:10000, WB:1:500-1:2000,
IHC:1:20-1:200, IF:1:50-1:200

Protein Background:

May play a role in sperm motility.

Gene ID:

CFAP65

Uniprot

Q6ZU64

Synonyms:

Cilia- and flagella-associated protein 65 (Coiled-coil domain-containing protein 108),
CFAP65, CCDC108

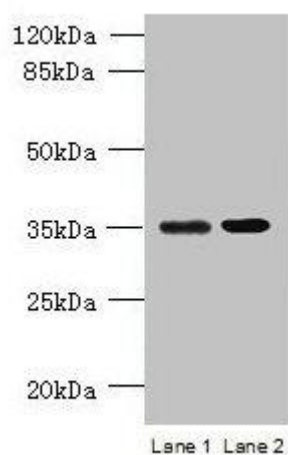
Immunogen:

Recombinant Human Cilia- and flagella-associated protein 65 protein (2-164AA).

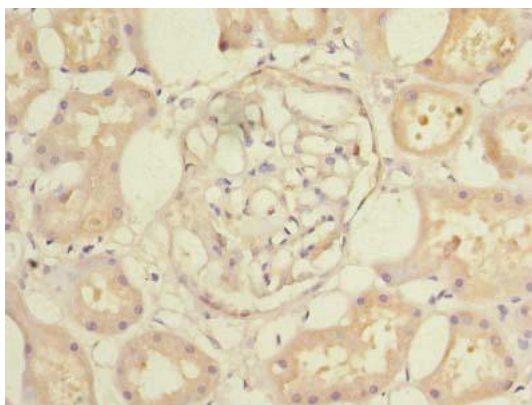
Storage:

Preservative: 0.03% Proclin 300. Constituents: 50% Glycerol, 0.01M PBS, PH 7.4

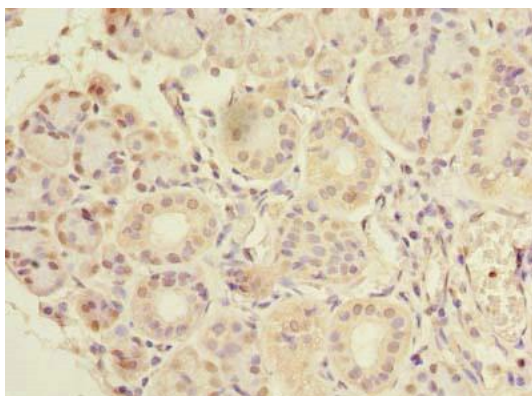
Product Images



Western blot. All lanes: CFAP65 antibody at 8 μ g/ml. Lane 1: U251 whole cell lysate. Lane 2: U87 whole cell lysate. Secondary: Goat polyclonal to rabbit IgG at 1/10000 dilution. Predicted band size: 218, 19, 82, 88 kDa. Observed band size: 35 kDa.



Immunohistochemistry of paraffin-embedded human kidney tissue using PACO37034 at dilution of 1:100.



Immunohistochemistry of paraffin-embedded human pancreatic tissue using PACO37034 at dilution of 1:100.