

## Product Information

**Size:**

50ug

**Reactivity:**

Human

**Source:**

Rabbit

**Isotype:**

IgG

**Applications:**

ELISA, IHC

**Recommended dilutions:**

ELISA:1:2000-1:10000, IHC:1:20-1:200

**Protein Background:**

Golgi membrane, phosphatidylinositol biosynthetic process, phospholipid metabolic process, small molecule metabolic process.

**Gene ID:**

TPTE2

**Uniprot**

Q6XPS3

**Synonyms:**

Phosphatidylinositol 3,4,5-trisphosphate 3-phosphatase TPTE2 (EC 3.1.3.67) (Lipid phosphatase TPIP) (TPTE and PTEN homologous inositol lipid phosphatase), TPTE2, TPIP

**Immunogen:**

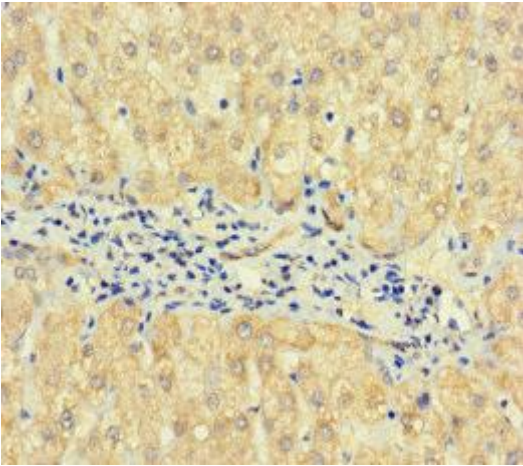
Recombinant Human Phosphatidylinositol 3,4,5-trisphosphate 3-phosphatase TPTE2 protein (167-411AA).

**Storage:**

Preservative: 0.03% Proclin 300. Constituents: 50% Glycerol, 0.01M PBS, PH 7.4

## Product Images

---



Immunohistochemistry of paraffin-embedded human liver cancer using PACO37030 at dilution of 1:100.