

PACO37014

Product Information

Size:

50ug

Reactivity:

Human

Source:

Rabbit

Isotype:

IgG

Applications:

ELISA, IF

Recommended dilutions:

ELISA:1:2000-1:10000, IF:1:50-1:200

Protein Background:

One gap junction consists of a cluster of closely packed pairs of transmembrane channels, the connexons, through which materials of low MW diffuse from one cell to a neighboring cell.

Gene ID:

GJB7

Uniprot

Q6PEY0

Synonyms:

Gap junction beta-7 protein (Connexin-25) (Cx25), GJB7, CX25

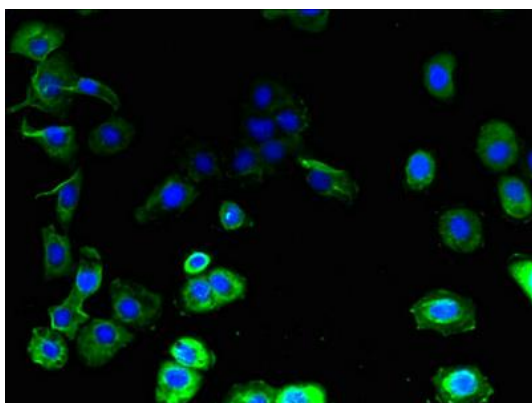
Immunogen:

Recombinant Human Gap junction beta-7 protein (41-75AA).

Storage:

Preservative: 0.03% Proclin 300. Constituents: 50% Glycerol, 0.01M PBS, PH 7.4

Product Images



Immunofluorescent analysis of A431 cells using PACO37014 at dilution of 1:100 and Alexa Fluor 488-conjugated AffiniPure Goat Anti-Rabbit IgG(H+L).