

SYT10 Antibody



PACO36986

Product Information

Size:

50ug

Reactivity:

Human

Source:

Rabbit

Isotype:

IgG

Applications:

ELISA, IHC

Recommended dilutions:

ELISA:1:2000-1:10000, IHC:1:20-1:200

Protein Background:

May be involved in Ca(2+)-dependent exocytosis of secretory vesicles through Ca(2+) and phospholipid binding to the C2 domain or may serve as Ca(2+) sensors in the process of vesicular trafficking and exocytosis.

Gene ID:

SYT10

Uniprot

Q6XYQ8

Synonyms:

Synaptotagmin-10 (Synaptotagmin X) (SytX), SYT10

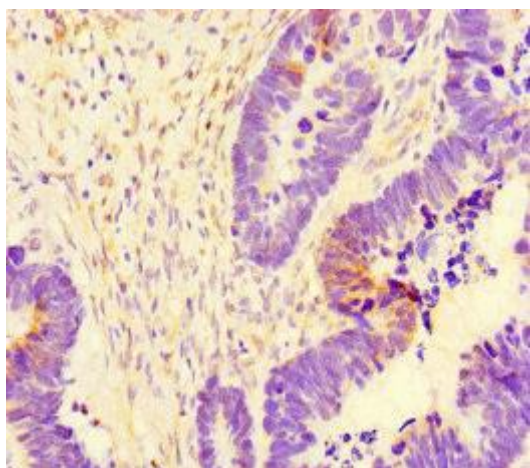
Immunogen:

Recombinant Human Synaptotagmin-10 protein (301-523AA).

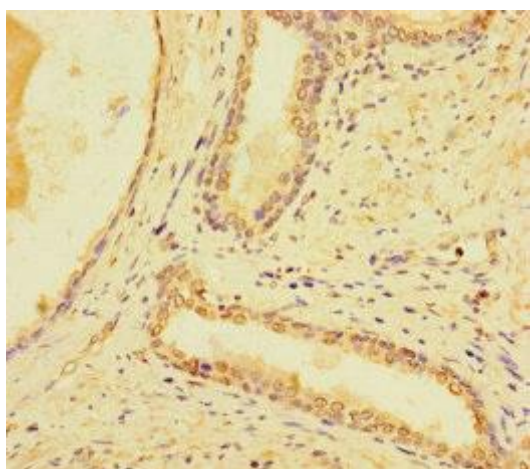
Storage:

Preservative: 0.03% Proclin 300. Constituents: 50% Glycerol, 0.01M PBS, PH 7.4

Product Images



Immunohistochemistry of paraffin-embedded human ovarian cancer using PACO36986 at dilution of 1:100.



Immunohistochemistry of paraffin-embedded human prostate cancer using PACO36986 at dilution of 1:100.