

# TUBA3E Antibody



PACO36970

---

## Product Information

**Size:**

50ug

**Reactivity:**

Human

**Source:**

Rabbit

**Isotype:**

IgG

**Applications:**

ELISA, WB, IHC

**Recommended dilutions:**

ELISA:1:2000-1:10000, WB:1:1000-1:5000,  
IHC:1:20-1:200

**Protein Background:**

Tubulin is the major constituent of microtubules. It binds two moles of GTP, one at an exchangeable site on the beta chain and one at a non-exchangeable site on the alpha chain.

**Gene ID:**

TUBA3E

**Uniprot**

Q6PEY2

**Synonyms:**

Tubulin alpha-3E chain (Alpha-tubulin 3E) [Cleaved into: Detyrosinated tubulin alpha-3E chain], TUBA3E

**Immunogen:**

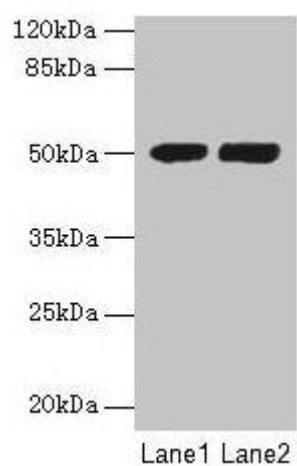
Recombinant Human Tubulin alpha-3E chain protein (1-250AA).

**Storage:**

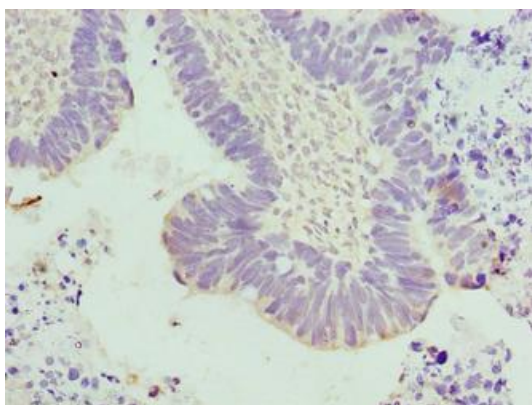
Preservative: 0.03% Proclin 300. Constituents: 50% Glycerol, 0.01M PBS, PH 7.4

## Product Images

---



Western blot. All lanes: TUBA3E antibody at 3 $\mu$ g/ml. Lane 1: MCF-7 whole cell lysate. Lane 2: HeLa whole cell lysate. Secondary. Goat polyclonal to rabbit IgG at 1/10000 dilution. Predicted band size: 50 kDa. Observed band size: 50 kDa.



Immunohistochemistry of paraffin-embedded human ovarian cancer using PACO36970 at dilution of 1:100.