

Product Information

Size:

50ug

Reactivity:

Human

Source:

Rabbit

Isotype:

IgG

Applications:

ELISA, IHC, IF

Recommended dilutions:

ELISA:1:2000-1:10000, IHC:1:20-1:200,
IF:1:50-1:200

Protein Background:

Amidase that catalyzes the last step of diphthamide biosynthesis using ammonium and ATP. Diphthamide biosynthesis consists in the conversion of an L-histidine residue in the translation elongation factor (EEF2) to diphthamide.

Gene ID:

DPH6

Uniprot

Q7L8W6

Synonyms:

Diphthine--ammonia ligase (EC 6.3.1.14) (ATP-binding domain-containing protein 4) (Diphthamide synthase) (Diphthamide synthetase) (Protein DPH6 homolog), DPH6, ATPBD4

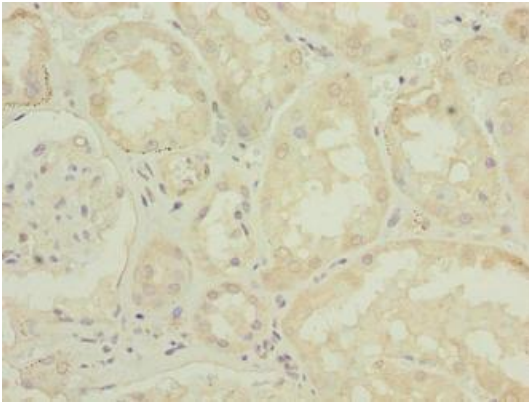
Immunogen:

Recombinant Human Diphthine--ammonia ligase protein (8-267AA).

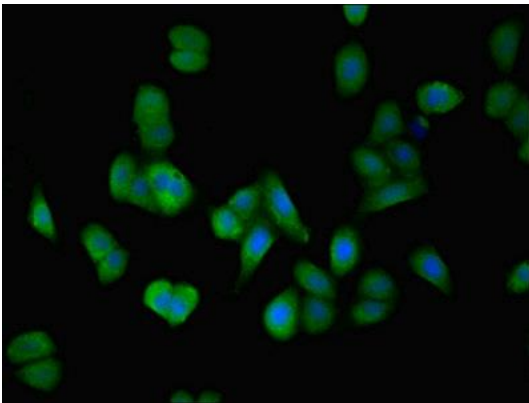
Storage:

Preservative: 0.03% Proclin 300. Constituents: 50% Glycerol, 0.01M PBS, PH 7.4

Product Images



Immunohistochemistry of paraffin-embedded human kidney tissue using PACO36926 at dilution of 1:100.



Immunofluorescent analysis of HepG2 cells using PACO36926 at dilution of 1:100 and Alexa Fluor 488-conjugated AffiniPure Goat Anti-Rabbit IgG(H+L).