

FBXW12 Antibody



PACO36910

Product Information

Size:

50ug

Reactivity:

Human

Source:

Rabbit

Isotype:

IgG

Applications:

ELISA, IHC

Recommended dilutions:

ELISA:1:2000-1:10000, IHC:1:20-1:200

Protein Background:

Substrate-recognition component of the SCF (SKP1-CUL1-F-box protein)-type E3 ubiquitin ligase complex.

Gene ID:

FBXW12

Uniprot

Q6X9E4

Synonyms:

F-box/WD repeat-containing protein 12 (F-box and WD-40 domain-containing protein 12) (F-box only protein 35), FBXW12, FBW12 FBXO12 FBXO35

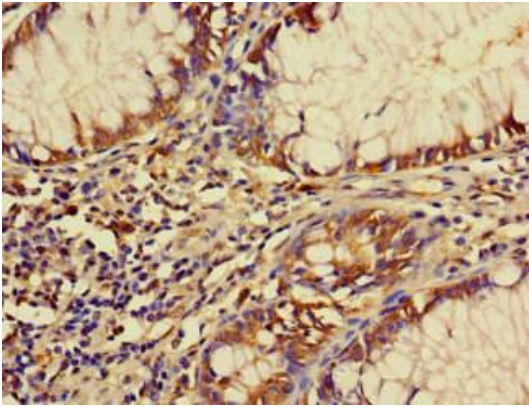
Immunogen:

Recombinant Human F-box/WD repeat-containing protein 12 protein (1-250AA).

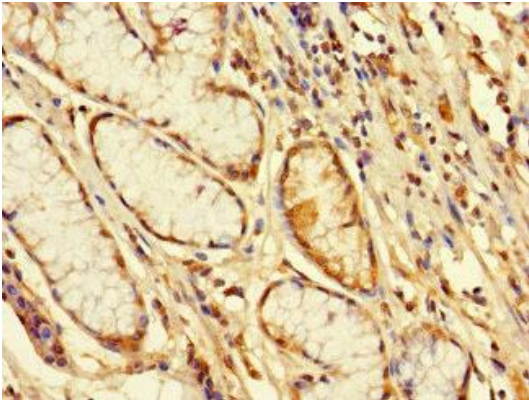
Storage:

Preservative: 0.03% Proclin 300. Constituents: 50% Glycerol, 0.01M PBS, PH 7.4

Product Images



Immunohistochemistry of paraffin-embedded human colon cancer using PACO36910 at dilution of 1:100.



Immunohistochemistry of paraffin-embedded human gastric cancer using PACO36910 at dilution of 1:100.