

Product Information

Size:

50ug

Reactivity:

Human

Source:

Rabbit

Isotype:

IgG

Applications:

ELISA, IHC

Recommended dilutions:

ELISA:1:2000-1:10000, IHC:1:20-1:200

Protein Background:

Involved in regulation of membrane traffic between the Golgi and the endoplasmic reticulum (ER); the function is proposed to depend on its association in the NRZ complex which is believed to play a role in SNARE assembly at the ER. May play a role in cell cycle checkpoint control. Essential for telomere length control.

Gene ID:

RINT1

Uniprot

Q6NUQ1

Synonyms:

RAD50-interacting protein 1 (RAD50 interactor 1) (HsRINT-1) (RINT-1), RINT1

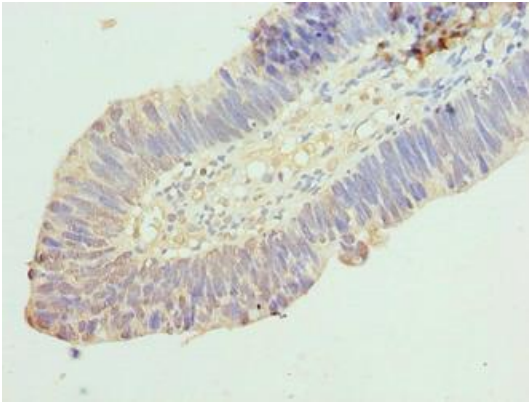
Immunogen:

Recombinant Human RAD50-interacting protein 1 protein (401-700AA).

Storage:

Preservative: 0.03% Proclin 300. Constituents: 50% Glycerol, 0.01M PBS, PH 7.4

Product Images



Immunohistochemistry of paraffin-embedded human ovarian cancer using PACO36830 at dilution of 1:100.