

PYHIN1 Antibody



PACO36818

Product Information

Size:

50ug

Reactivity:

Human, Mouse

Source:

Rabbit

Isotype:

IgG

Applications:

ELISA, WB

Recommended dilutions:

ELISA:1:2000-1:10000, WB:1:1000-1:5000

Protein Background:

Major mediator of the tumor suppressor activity of IFN in breast cancer cells. Promotes ubiquitination and subsequent degradation of MDM2, which leads to p53/TP53 stabilization. Promotes ubiquitination and subsequent degradation of HDAC1, which in turn enhances maspin expression, and impairs invasive activity of cancer cells.

Gene ID:

PYHIN1

Uniprot

Q6K0P9

Synonyms:

Pyrin and HIN domain-containing protein 1 (Interferon-inducible protein X), PYHIN1, IFIX

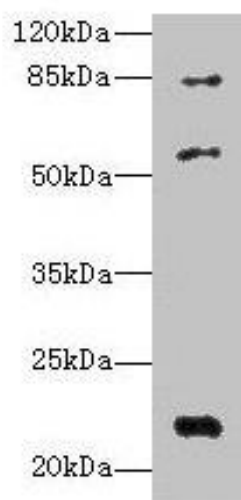
Immunogen:

Recombinant Human Pyrin and HIN domain-containing protein 1 protein (1-245AA).

Storage:

Preservative: 0.03% Proclin 300. Constituents: 50% Glycerol, 0.01M PBS, PH 7.4

Product Images



Western blot. All lanes: PYHIN1 antibody at 6 μ g/ml + Mouse small intestine tissue. Secondary. Goat polyclonal to rabbit IgG at 1/10000 dilution. Predicted band size: 56, 55, 52, 51, 27, 26 kDa. Observed band size: 56, 22, 84 kDa.