

# WDR88 Antibody



PACO36782

---

## Product Information

**Size:**

50ug

**Reactivity:**

Human

**Source:**

Rabbit

**Isotype:**

IgG

**Applications:**

ELISA, WB, IHC

**Recommended dilutions:**

ELISA:1:2000-1:10000, WB:1:500-1:2000,  
IHC:1:20-1:200

**Protein Background:**

**Gene ID:**

WDR88

**Uniprot**

Q6ZMY6

**Synonyms:**

WD repeat-containing protein 88 (PQQ repeat and WD repeat-containing protein),  
WDR88, PQWD

**Immunogen:**

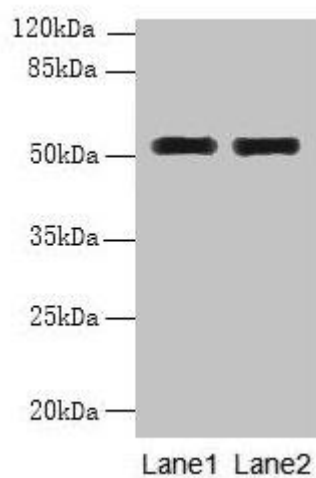
Recombinant Human WD repeat-containing protein 88 protein (1-250AA).

**Storage:**

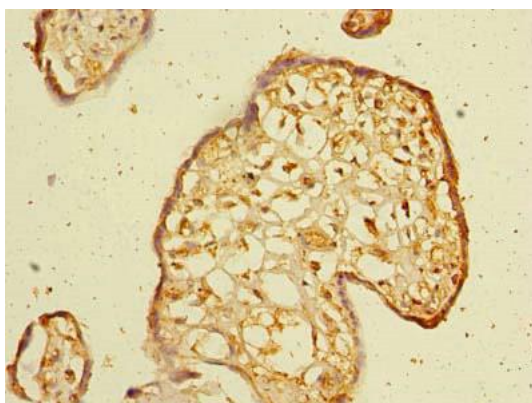
Preservative: 0.03% Proclin 300. Constituents: 50% Glycerol, 0.01M PBS, PH 7.4

## Product Images

---



Western blot. All lanes: WDR88 antibody at 6 $\mu$ g/ml. Lane 1: MCF-7 whole cell lysate. Lane 2: A549 whole cell lysate. Secondary. Goat polyclonal to rabbit IgG at 1/10000 dilution. Predicted band size: 53, 48 kDa. Observed band size: 53 kDa.



Immunohistochemistry of paraffin-embedded human placenta tissue using PACO36782 at dilution of 1:100.