

LRRC31 Antibody



PACO36778

Product Information

Size:

50ug

Reactivity:

Human, Mouse

Source:

Rabbit

Isotype:

IgG

Applications:

ELISA, WB, IHC

Recommended dilutions:

ELISA:1:2000-1:10000, WB:1:500-1:5000,
IHC:1:20-1:200

Protein Background:

Gene ID:

LRRC31

Uniprot

Q6UY01

Synonyms:

Leucine-rich repeat-containing protein 31, LRRC31

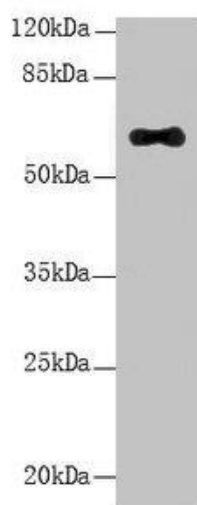
Immunogen:

Recombinant Human Leucine-rich repeat-containing protein 31 protein (1-300AA).

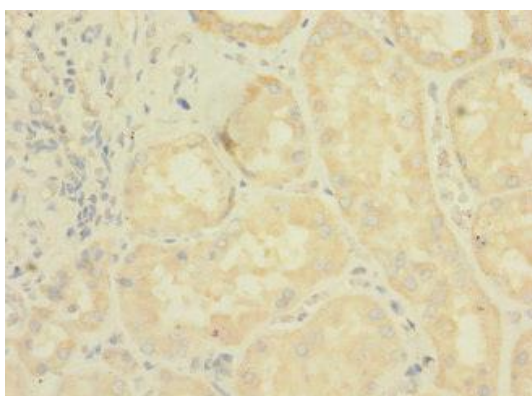
Storage:

Preservative: 0.03% Proclin 300. Constituents: 50% Glycerol, 0.01M PBS, PH 7.4

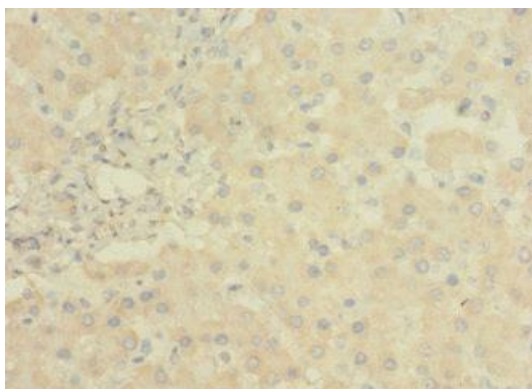
Product Images



Western Blot. All lanes: LRRC31 antibody at 5 μ g/ml + Mouse small intestine tissue. Secondary. Goat polyclonal to rabbit IgG at 1/10000 dilution. Predicted band size: 62, 56, 39, 49 kDa. Observed band size: 62 kDa.



Immunohistochemistry of paraffin-embedded human kidney tissue using PACO36778 at dilution of 1:100.



Immunohistochemistry of paraffin-embedded human liver tissue using PACO36778 at dilution of 1:100.