

# TMEM270 Antibody



PACO36766

---

## Product Information

**Size:**

50ug

**Reactivity:**

Human

**Source:**

Rabbit

**Isotype:**

IgG

**Applications:**

ELISA, IHC, IF

**Recommended dilutions:**

ELISA:1:2000-1:10000, IHC:1:20-1:200,  
IF:1:50-1:200

**Protein Background:****Gene ID:**

TMEM270

**Uniprot**

Q6UE05

**Synonyms:**

Transmembrane protein 270 (Williams-Beuren syndrome chromosomal region 28 protein), TMEM270, WBSCR28

**Immunogen:**

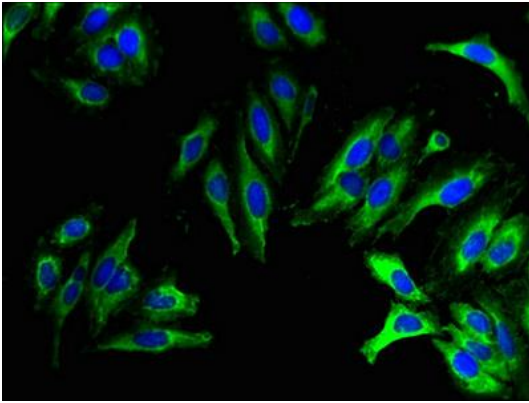
Recombinant Human Transmembrane protein 270 protein (206-265AA).

**Storage:**

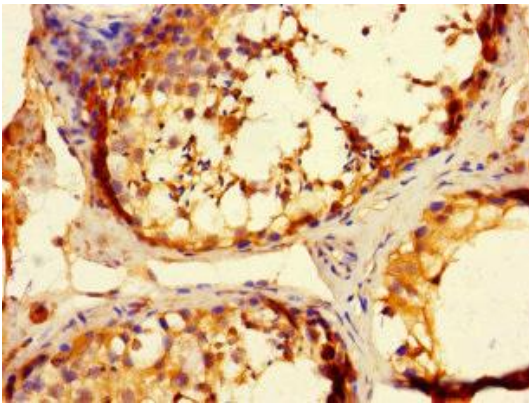
Preservative: 0.03% Proclin 300. Constituents: 50% Glycerol, 0.01M PBS, PH 7.4

## Product Images

---



Immunofluorescent analysis of HeLa cells using PACO36766 at dilution of 1:100 and Alexa Fluor 488-conjugated AffiniPure Goat Anti-Rabbit IgG(H+L).



Immunohistochemistry of paraffin-embedded human testis tissue using PACO36766 at dilution of 1:100.