

PACO36750

Product Information

Size:

50ug

Reactivity:

Human

Source:

Rabbit

Isotype:

IgG

Applications:

ELISA, IHC, IF

Recommended dilutions:

ELISA:1:2000-1:10000, IHC:1:20-1:200,
IF:1:50-1:200

Protein Background:

Component of the volume-regulated anion channel (VRAC, also named VSOAC channel), an anion channel required to maintain a constant cell volume in response to extracellular or intracellular osmotic changes. The VRAC channel conducts iodide better than chloride and may also conduct organic osmolytes like taurine. It is unclear whether LRRC8E constitutes a pore-forming subunit or whether it is closely associated with the pore.

Gene ID:

LRRC8E

Uniprot

Q6NSJ5

Synonyms:

Volume-regulated anion channel subunit LRRC8E (Leucine-rich repeat-containing protein 8E), LRRC8E

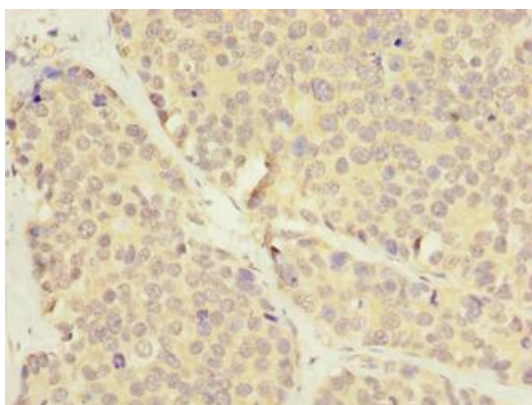
Immunogen:

Recombinant Human Volume-regulated anion channel subunit LRRC8E protein (353-630AA).

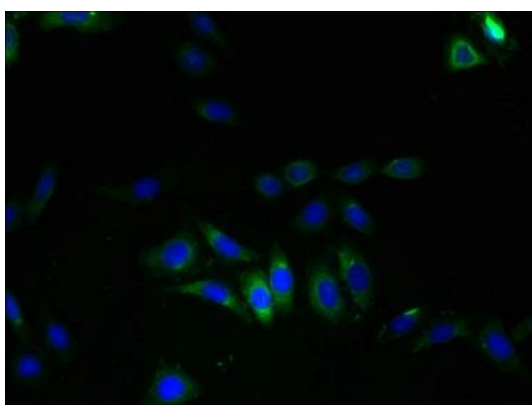
Storage:

Preservative: 0.03% Proclin 300. Constituents: 50% Glycerol, 0.01M PBS, PH 7.4

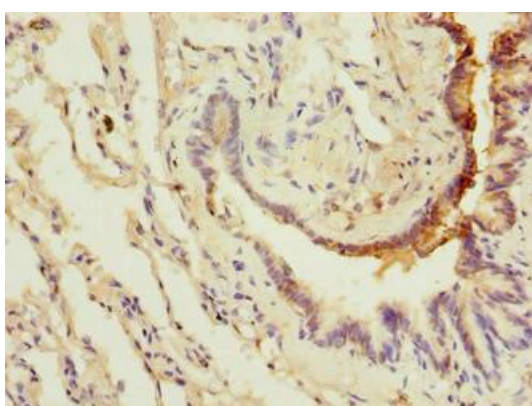
Product Images



Immunohistochemistry of paraffin-embedded human gastric cancer using PACO36750 at dilution of 1:100.



Immunofluorescent analysis of HepG2 cells using PACO36750 at dilution of 1:100 and Alexa Fluor 488-conjugated AffiniPure Goat Anti-Rabbit IgG(H+L).



Immunohistochemistry of paraffin-embedded human lung tissue using PACO36750 at dilution of 1:100.