

FAM151B Antibody



PACO36710

Product Information

Size:

50ug

Reactivity:

Human, Mouse

Source:

Rabbit

Isotype:

IgG

Applications:

ELISA, WB, IHC, IF

Recommended dilutions:

ELISA:1:2000-1:10000, WB:1:1000-1:5000,
IHC:1:20-1:200, IF:1:50-1:200

Protein Background:**Gene ID:**

FAM151B

Uniprot

Q6UXP7

Synonyms:

Protein FAM151B, FAM151B

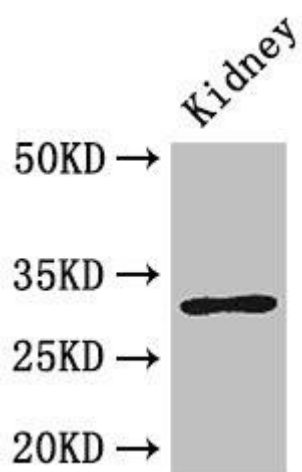
Immunogen:

Recombinant Human Protein FAM151B protein (1-276AA).

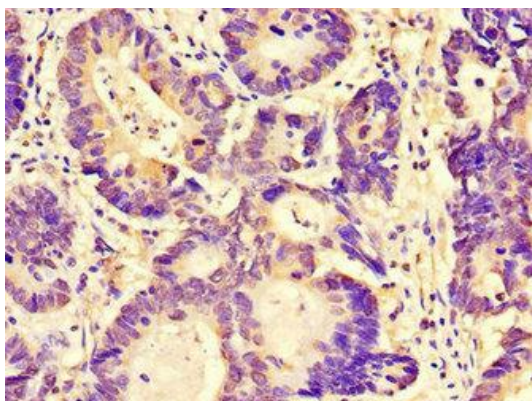
Storage:

Preservative: 0.03% Proclin 300. Constituents: 50% Glycerol, 0.01M PBS, PH 7.4

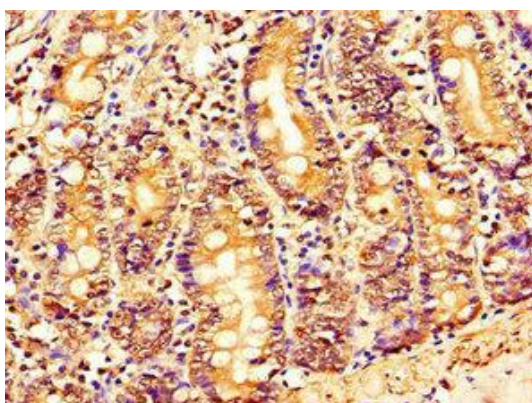
Product Images



Western Blot. Positive WB detected in: Mouse kidney tissue. All lanes: FAM151B antibody at 2.6µg/ml. Secondary. Goat polyclonal to rabbit IgG at 1/50000 dilution. Predicted band size: 32 kDa. Observed band size: 32 kDa.



Immunohistochemistry of paraffin-embedded human colon cancer using PACO36710 at dilution of 1:100.



Immunohistochemistry of paraffin-embedded human small intestine tissue using PACO36710 at dilution of 1:100.