

# OLFML1 Antibody



PACO36706

---

## Product Information

**Size:**

50ug

**Reactivity:**

Human, Mouse

**Source:**

Rabbit

**Isotype:**

IgG

**Applications:**

ELISA, WB, IHC, IF

**Recommended dilutions:**

ELISA:1:2000-1:10000, WB:1:1000-1:5000,  
IHC:1:20-1:200, IF:1:50-1:200

**Protein Background:**

**Gene ID:**

OLFML1

**Uniprot**

Q6UWY5

**Synonyms:**

Olfactomedin-like protein 1, OLFML1

**Immunogen:**

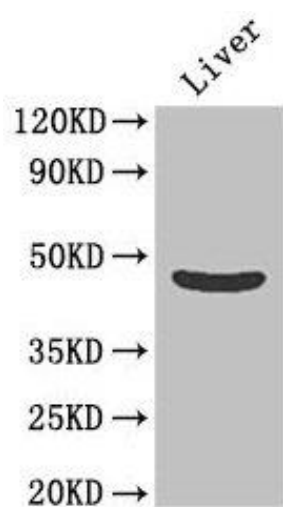
Recombinant Human Olfactomedin-like protein 1 protein (201-402AA).

**Storage:**

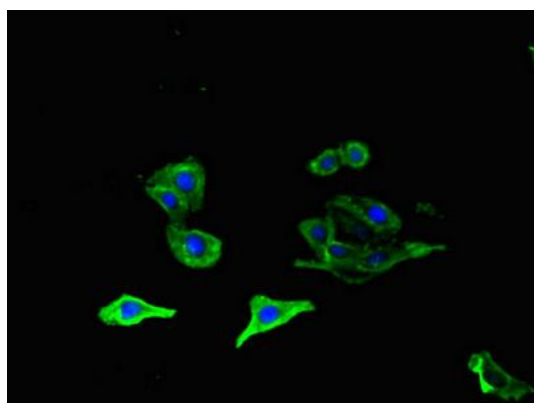
Preservative: 0.03% Proclin 300. Constituents: 50% Glycerol, 0.01M PBS, PH 7.4

## Product Images

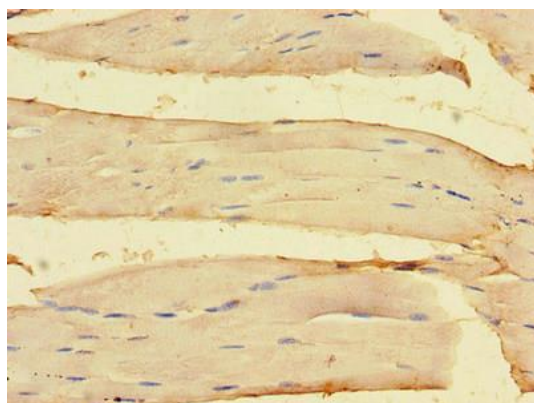
---



Western Blot. Positive WB detected in: Mouse liver tissue. All lanes: OLFML1 antibody at 2 $\mu$ g/ml. Secondary. Goat polyclonal to rabbit IgG at 1/50000 dilution. Predicted band size: 46 kDa. Observed band size: 46 kDa.



Immunofluorescent analysis of HepG2 cells using PACO36706 at dilution of 1:100 and Alexa Fluor 488-conjugated AffiniPure Goat Anti-Rabbit IgG(H+L).



Immunohistochemistry of paraffin-embedded human skeletal muscle tissue using PACO36706 at dilution of 1:100.