

PACO36642

---

## Product Information

**Size:**

50ug

**Reactivity:**

Human

**Source:**

Rabbit

**Isotype:**

IgG

**Applications:**

ELISA, IHC, IF

**Recommended dilutions:**

ELISA:1:2000-1:10000, IHC:1:20-1:200,  
IF:1:50-1:200

**Protein Background:**

Plays a role in myelin formation.

**Gene ID:**

NCMAP

**Uniprot**

Q5T1S8

**Synonyms:**

Noncompact myelin-associated protein (Myelin protein of 11 kDa) (MP11), NCMAP, C1orf130

**Immunogen:**

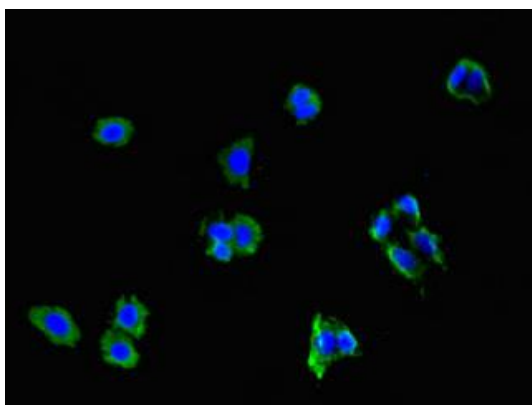
Recombinant Human Noncompact myelin-associated protein (54-102AA).

**Storage:**

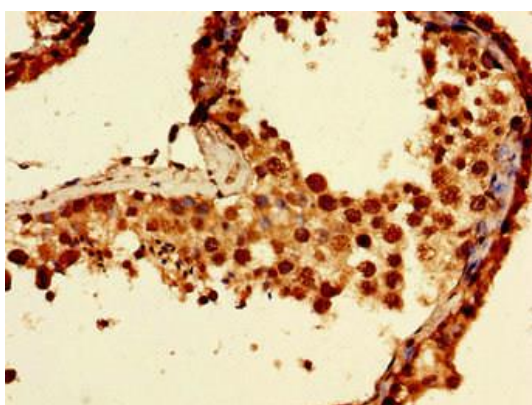
Preservative: 0.03% Proclin 300. Constituents: 50% Glycerol, 0.01M PBS, PH 7.4

## Product Images

---



Immunofluorescent analysis of HepG2 cells using PACO36642 at dilution of 1:100 and Alexa Fluor 488-conjugated AffiniPure Goat Anti-Rabbit IgG(H+L).



Immunohistochemistry of paraffin-embedded human testis tissue using PACO36642 at dilution of 1:100.