

OLFML2B Antibody



PACO36626

Product Information

Size:

50ug

Reactivity:

Human, Mouse

Source:

Rabbit

Isotype:

IgG

Applications:

ELISA, WB, IHC

Recommended dilutions:

ELISA:1:2000-1:10000, WB:1:500-1:5000,
IHC:1:20-1:200

Protein Background:**Gene ID:**

OLFML2B

Uniprot

Q68BL8

Synonyms:

Olfactomedin-like protein 2B (Photomedin-2), OLFML2B

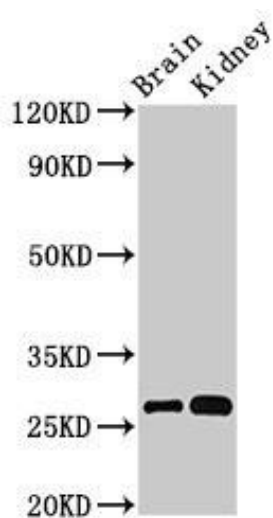
Immunogen:

Recombinant Human Olfactomedin-like protein 2B protein (451-750AA).

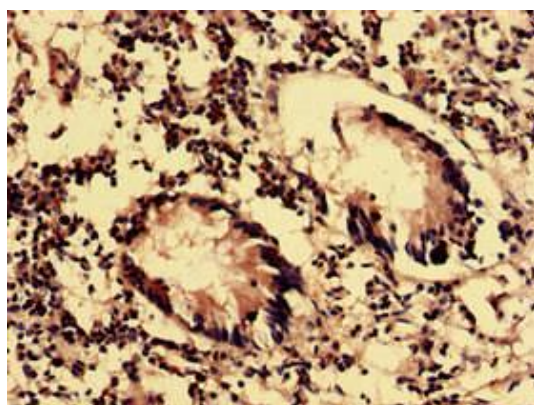
Storage:

Preservative: 0.03% Proclin 300. Constituents: 50% Glycerol, 0.01M PBS, PH 7.4

Product Images



Western Blot. Positive WB detected in: Mouse brain tissue, Mouse kidney tissue. All lanes: OLFML2B antibody at 3 μ g/ml. Secondary. Goat polyclonal to rabbit IgG at 1/50000 dilution. Predicted band size: 84, 28 kDa. Observed band size: 28 kDa.



Immunohistochemistry analysis of human appendix tissue using PACO36626 at dilution of 1:100.