

TEX35 Antibody



PACO36586

Product Information

Size:

50ug

Reactivity:

Human

Source:

Rabbit

Isotype:

IgG

Applications:

ELISA, WB, IHC

Recommended dilutions:

ELISA:1:2000-1:10000, WB:1:1000-1:5000,
IHC:1:20-1:200

Protein Background:

Gene ID:

TEX35

Uniprot

Q5T0J7

Synonyms:

Testis-expressed protein 35, TEX35, C1orf49

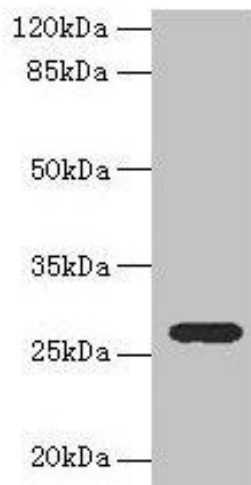
Immunogen:

Recombinant Human Testis-expressed protein 35 protein (1-215AA).

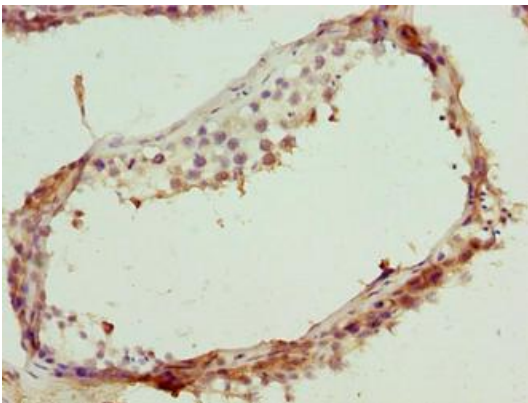
Storage:

Preservative: 0.03% Proclin 300. Constituents: 50% Glycerol, 0.01M PBS, PH 7.4

Product Images



Western blot. All lanes: TEX35 antibody at 4 μ g/ml + U251 whole cell lysate. Secondary. Goat polyclonal to rabbit IgG at 1/10000 dilution. Predicted band size: 27, 26, 24, 21, 25 kDa. Observed band size: 27 kDa.



Immunohistochemistry of paraffin-embedded human testis tissue using PACO36586 at dilution of 1:100.