

L1TD1 Antibody



PACO36546

Product Information

Size:

50ug

Reactivity:

Human

Source:

Rabbit

Isotype:

IgG

Applications:

ELISA, IHC

Recommended dilutions:

ELISA:1:2000-1:10000, IHC:1:20-1:200

Protein Background:

Gene ID:

L1TD1

Uniprot

Q5T7N2

Synonyms:

LINE-1 type transposase domain-containing protein 1 (ES cell-associated protein 11), L1TD1, ECAT11

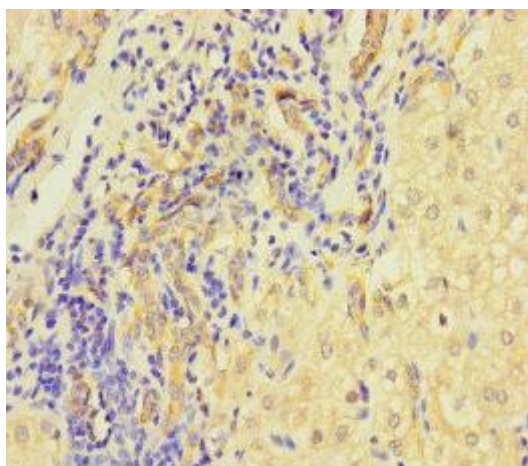
Immunogen:

Recombinant Human LINE-1 type transposase domain-containing protein 1 protein (665-865AA).

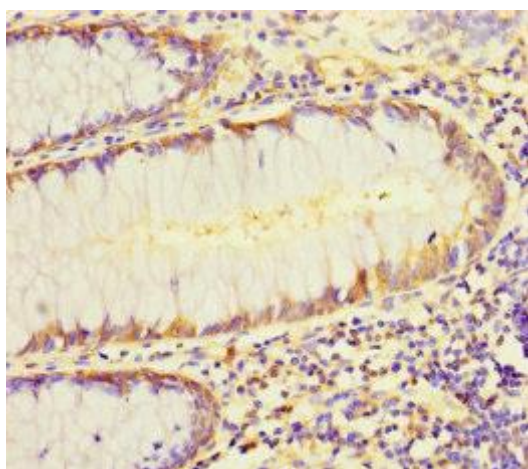
Storage:

Preservative: 0.03% Proclin 300. Constituents: 50% Glycerol, 0.01M PBS, PH 7.4

Product Images



Immunohistochemistry of paraffin-embedded human liver cancer using PACO36546 at dilution of 1:100.



Immunohistochemistry of paraffin-embedded human colon cancer using PACO36546 at dilution of 1:100.