

# RTP2 Antibody



PACO36530

---

## Product Information

**Size:**

50ug

**Reactivity:**

Human, Mouse

**Source:**

Rabbit

**Isotype:**

IgG

**Applications:**

ELISA, WB

**Recommended dilutions:**

ELISA:1:2000-1:10000, WB:1:1000-1:5000

**Protein Background:**

Specifically promotes functional cell surface expression of olfactory receptors, but not of other GPCRs.

**Gene ID:**

RTP2

**Uniprot**

Q5QGT7

**Synonyms:**

Receptor-transporting protein 2 (3CxxC-type zinc finger protein 2), RTP2, Z3CXXC2

**Immunogen:**

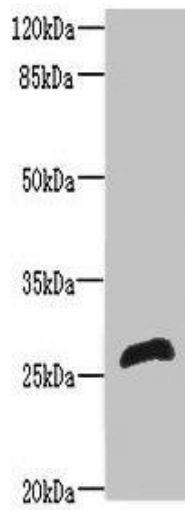
Recombinant Human Receptor-transporting protein 2 protein (1-196AA).

**Storage:**

Preservative: 0.03% Proclin 300. Constituents: 50% Glycerol, 0.01M PBS, PH 7.4

## Product Images

---



Western blot. All lanes: RTP2 antibody at 8 $\mu$ g/ml + Mouse liver tissue. Secondary. Goat polyclonal to rabbit IgG at 1/10000 dilution. Predicted band size: 27 kDa. Observed band size: 27 kDa.