

# CWF19L1 Antibody



PACO36518

---

## Product Information

**Size:**

50ug

**Reactivity:**

Human

**Source:**

Rabbit

**Isotype:**

IgG

**Applications:**

ELISA, WB, IHC

**Recommended dilutions:**

ELISA:1:2000-1:10000, WB:1:500-1:2000,  
IHC:1:20-1:200

**Protein Background:**

**Gene ID:**

CWF19L1

**Uniprot**

Q69YN2

**Synonyms:**

CWF19-like protein 1 (C19L1), CWF19L1

**Immunogen:**

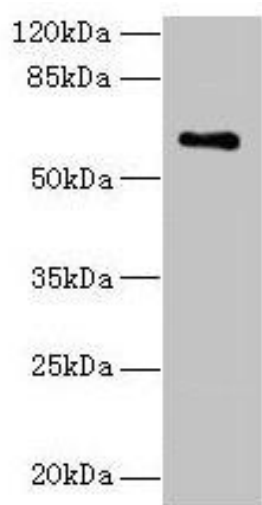
Recombinant Human CWF19-like protein 1 protein (101-330AA).

**Storage:**

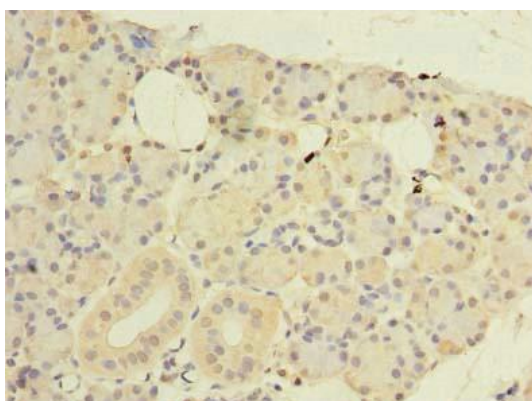
Preservative: 0.03% Proclin 300. Constituents: 50% Glycerol, 0.01M PBS, PH 7.4

## Product Images

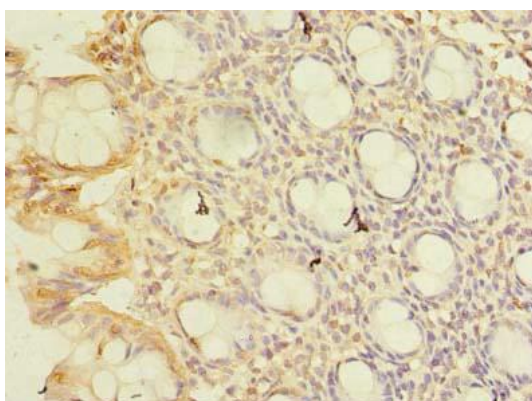
---



Western blot. All lanes: CWF19L1 antibody at 4 $\mu$ g/ml + Raji whole cell lysate. Secondary. Goat polyclonal to rabbit IgG at 1/10000 dilution. Predicted band size: 61, 28, 46 kDa. Observed band size: 61 kDa.



Immunohistochemistry of paraffin-embedded human pancreatic tissue using PACO36518 at dilution of 1:100.



Immunohistochemistry of paraffin-embedded human colon tissue using PACO36518 at dilution of 1:100.