

FBXW10 Antibody



PACO36506

Product Information

Size:

50ug

Reactivity:

Human

Source:

Rabbit

Isotype:

IgG

Applications:

ELISA, IHC

Recommended dilutions:

ELISA:1:2000-1:10000, IHC:1:20-1:200

Protein Background:

Probable substrate-recognition component of a SCF (SKP1-CUL1-F-box protein)-type E3 ubiquitin ligase complex which mediates the ubiquitination and subsequent proteasomal degradation of target proteins. Overexpression is leading to degradation of CBX5 and CBX1.

Gene ID:

FBXW10

Uniprot

Q5XX13

Synonyms:

F-box/WD repeat-containing protein 10 (F-box and WD-40 domain-containing protein 10) (Ubiquitin ligase-specificity factor), FBXW10

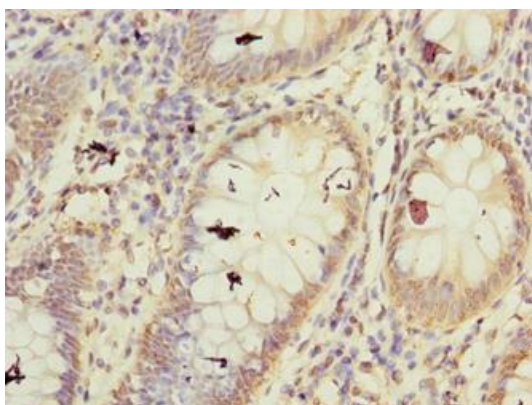
Immunogen:

Recombinant Human F-box/WD repeat-containing protein 10 protein (701-1000AA).

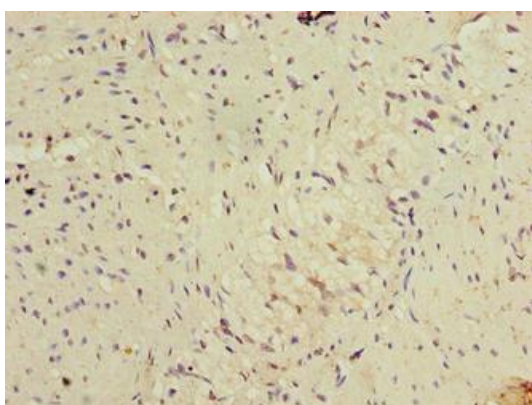
Storage:

Preservative: 0.03% Proclin 300. Constituents: 50% Glycerol, 0.01M PBS, PH 7.4

Product Images



Immunohistochemistry of paraffin-embedded human colon cancer using PACO36506 at dilution of 1:100.



Immunohistochemistry of paraffin-embedded human colon tissue using PACO36506 at dilution of 1:100.