

PACO36498

---

## Product Information

**Size:**

50ug

**Reactivity:**

Human

**Source:**

Rabbit

**Isotype:**

IgG

**Applications:**

ELISA, IHC

**Recommended dilutions:**

ELISA:1:2000-1:10000, IHC:1:20-1:200

**Protein Background:**

May be involved in the maintenance of both the function and the viability of sensory neurons, including photoreceptors and olfactory neurons.

**Gene ID:**

NXNL2

**Uniprot**

Q5VZ03

**Synonyms:**

Nucleoredoxin-like protein 2 (Rod-derived cone viability factor 2) (RdCVF2), NXNL2, C9orf121

**Immunogen:**

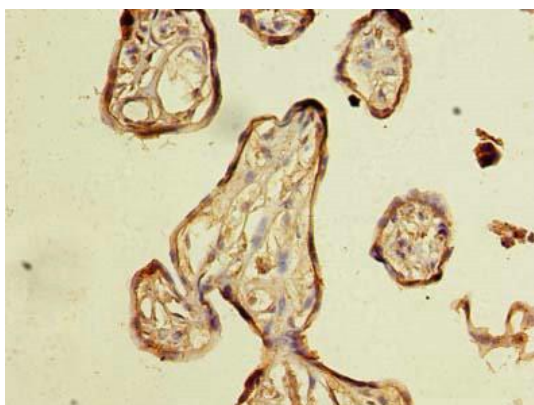
Recombinant Human Nucleoredoxin-like protein 2 protein (1-135AA).

**Storage:**

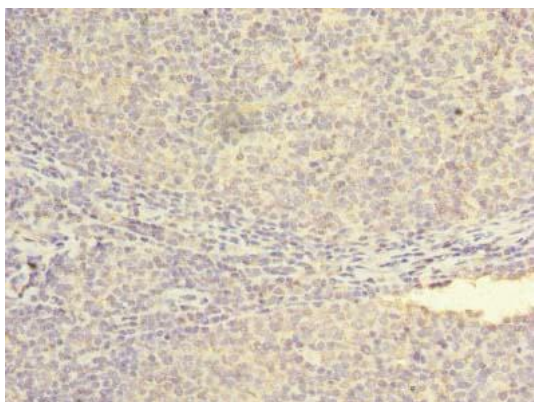
Preservative: 0.03% Proclin 300. Constituents: 50% Glycerol, 0.01M PBS, PH 7.4

## Product Images

---



Immunohistochemistry of paraffin-embedded human placenta tissue using PACO36498 at dilution of 1:100.



Immunohistochemistry of paraffin-embedded human tonsil tissue using PACO36498 at dilution of 1:100.