

# LCE2A Antibody



PACO36410

---

## Product Information

**Size:**

50ug

**Reactivity:**

Human

**Source:**

Rabbit

**Isotype:**

IgG

**Applications:**

ELISA, IHC

**Recommended dilutions:**

ELISA:1:2000-1:10000, IHC:1:20-1:200

**Protein Background:**

Precursors of the cornified envelope of the stratum corneum.

**Gene ID:**

LCE2A

**Uniprot**

Q5TA79

**Synonyms:**

Late cornified envelope protein 2A (Late envelope protein 9), LCE2A, LEP9

**Immunogen:**

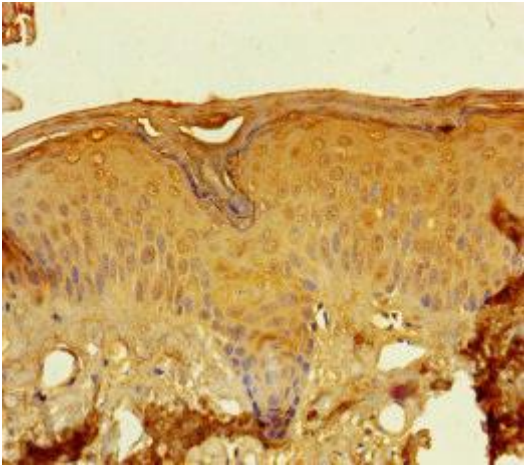
Recombinant Human Late cornified envelope protein 2A protein (1-106AA).

**Storage:**

Preservative: 0.03% Proclin 300. Constituents: 50% Glycerol, 0.01M PBS, PH 7.4

## Product Images

---



Immunohistochemistry of paraffin-embedded human skin tissue using PACO36410 at dilution of 1:100.