

PACO36402

---

## Product Information

**Size:**

50ug

**Reactivity:**

Human, Mouse

**Source:**

Rabbit

**Isotype:**

IgG

**Applications:**

ELISA, WB, IHC, IF

**Recommended dilutions:**

ELISA:1:2000-1:10000, WB:1:500-1:5000,  
IHC:1:20-1:200, IF:1:50-1:200

**Protein Background:**

Auxiliary component of the CatSper complex, a complex involved in sperm cell hyperactivation. Sperm cell hyperactivation is needed for sperm motility which is essential late in the preparation of sperm for fertilization.

**Gene ID:**

CATSPERE

**Uniprot**

Q5SY80

**Synonyms:**

Cation channel sperm-associated protein subunit epsilon (CatSper-epsilon)  
(CatSperepsilon), CATSPERE, C1orf101

**Immunogen:**

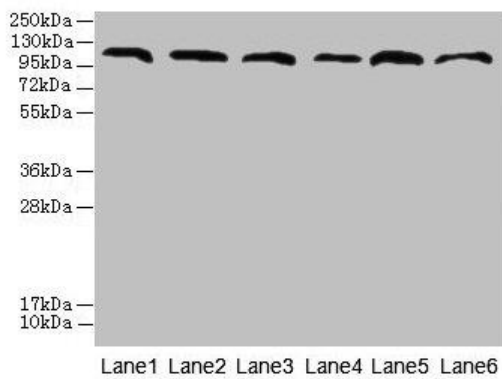
Recombinant Human Cation channel sperm-associated protein subunit epsilon protein (601-832AA).

**Storage:**

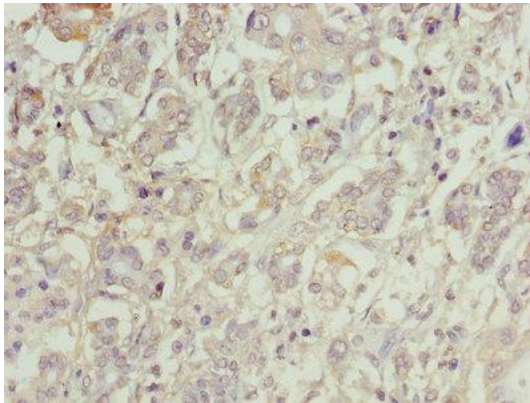
Preservative: 0.03% Proclin 300. Constituents: 50% Glycerol, 0.01M PBS, PH 7.4

## Product Images

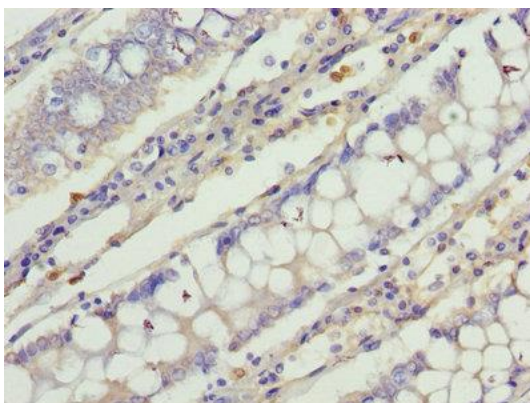
---



Western blot. All lanes: CATSPERE antibody at 6 $\mu$ g/ml. Lane 1: U87 whole cell lysate. Lane 2: HepG2 whole cell lysate. Lane 3: A549 whole cell lysate. Lane 4: Mouse lung tissue. Lane 5: Mouse liver tissue. Lane 6: PC-3 whole cell lysate. Secondary. Goat polyclonal to rabbit IgG at 1/10000 dilution. Predicted band size: 110, 96, 93 kDa. Observed band size: 110 kDa.



Immunohistochemistry of paraffin-embedded human pancreatic cancer using PACO36402 at dilution of 1:100.



Immunohistochemistry of paraffin-embedded human colon cancer using PACO36402 at dilution of 1:100.