

TTC38 Antibody



PACO36398

Product Information

Size:

50ug

Reactivity:

Human, Mouse

Source:

Rabbit

Isotype:

IgG

Applications:

ELISA, WB, IHC

Recommended dilutions:

ELISA:1:2000-1:10000, WB:1:500-1:2000,
IHC:1:20-1:200

Protein Background:**Gene ID:**

TTC38

Uniprot

Q5R3I4

Synonyms:

Tetratricopeptide repeat protein 38 (TPR repeat protein 38), TTC38

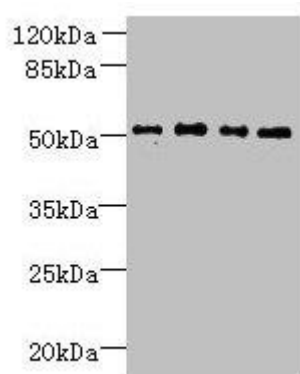
Immunogen:

Recombinant Human Tetratricopeptide repeat protein 38 protein (2-200AA).

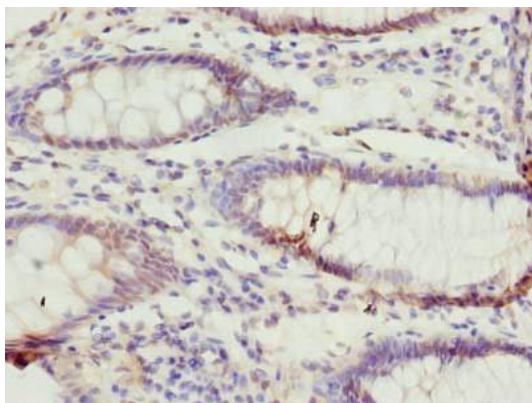
Storage:

Preservative: 0.03% Proclin 300. Constituents: 50% Glycerol, 0.01M PBS, PH 7.4

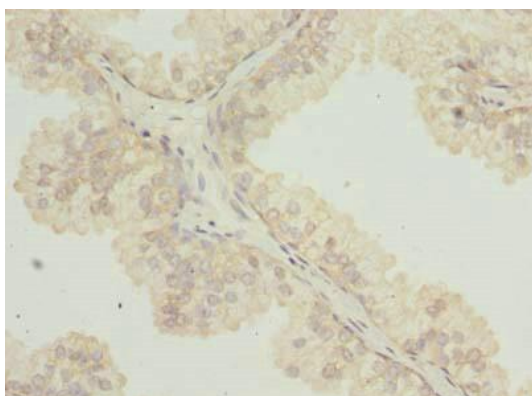
Product Images



Western blot. All lanes: TTC38 antibody at 1.5 μ g/ml. Lane 1: U251 whole cell lysate. Lane 2: Mouse liver tissue. Lane 3: HepG2 whole cell lysate. Lane 4: K562 whole cell lysate. Secondary. Goat polyclonal to rabbit IgG at 1/10000 dilution. Predicted band size: 53 kDa. Observed band size: 53 kDa.



Immunohistochemistry of paraffin-embedded human colon cancer using PACO36398 at dilution of 1:100.



Immunohistochemistry of paraffin-embedded human prostate cancer using PACO36398 at dilution of 1:100.