

Ly6e Antibody



PACO36374

Product Information

Size:

50ug

Reactivity:

Mouse, Human

Source:

Rabbit

Isotype:

IgG

Applications:

ELISA, WB

Recommended dilutions:

ELISA:1:2000-1:10000, WB:1:500-1:2000

Protein Background:

Involved in T-cell development.

Gene ID:

Ly6e

Uniprot

Q64253

Synonyms:

Lymphocyte antigen 6E (Ly-6E) (Stem cell antigen 2) (Thymic shared antigen 1) (TSA-1), Ly6e, Ly67 Sca-2 Tsa-1

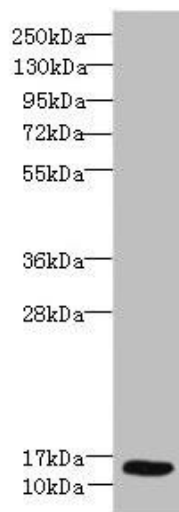
Immunogen:

Recombinant Mouse Lymphocyte antigen 6E protein (21-102AA).

Storage:

Preservative: 0.03% Proclin 300. Constituents: 50% Glycerol, 0.01M PBS, PH 7.4

Product Images



Western blot. All lanes: Ly6e antibody at 8 μ g/ml + HeLa whole cell lysate. Secondary. Goat polyclonal to rabbit IgG at 1/10000 dilution. Predicted band size: 14 kDa. Observed band size: 14 kDa.