

PACO36366

Product Information

Size:

50ug

Reactivity:

Human

Source:

Rabbit

Isotype:

IgG

Applications:

ELISA, IHC

Recommended dilutions:

ELISA:1:2000-1:10000, IHC:1:20-1:200

Protein Background:

Microtubule-dependent motor protein that acts as a negative regulator of ciliogenesis by mediating recruitment of CCP110 to mother centriole in cycling cells, leading to restrict nucleation of cilia at centrioles. Mediates depolymerization of microtubules of centriolar origin, possibly to suppress aberrant cilia formation.

Gene ID:

KIF24

Uniprot

Q5T7B8

Synonyms:

Kinesin-like protein KIF24, KIF24, C9orf48

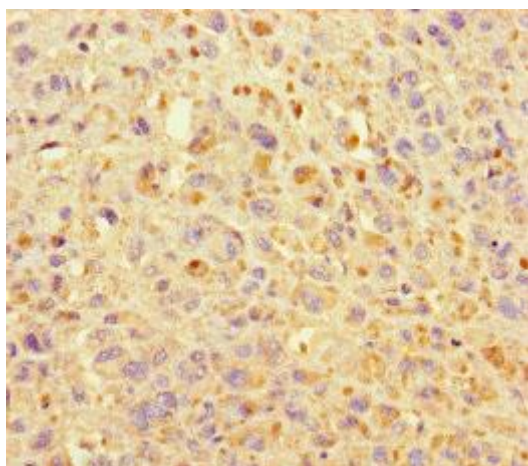
Immunogen:

Recombinant Human Kinesin-like protein KIF24 protein (1168-1368AA).

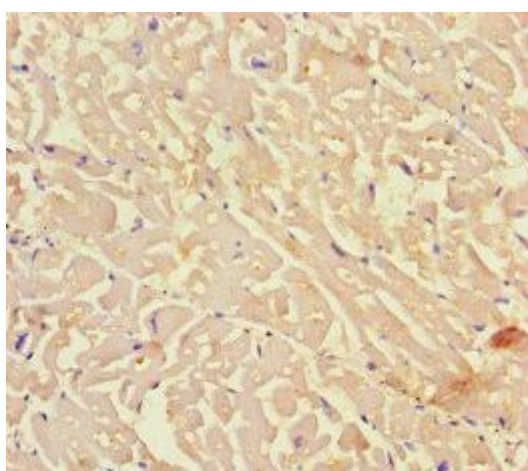
Storage:

Preservative: 0.03% Proclin 300. Constituents: 50% Glycerol, 0.01M PBS, PH 7.4

Product Images



Immunohistochemistry of paraffin-embedded human melanoma using PACO36366 at dilution of 1:100.



Immunohistochemistry of paraffin-embedded human heart tissue using PACO36366 at dilution of 1:100.