

SPATA46 Antibody



PACO36358

Product Information

Size:

50ug

Reactivity:

Human

Source:

Rabbit

Isotype:

IgG

Applications:

ELISA, IHC

Recommended dilutions:

ELISA:1:2000-1:10000, IHC:1:20-1:200

Protein Background:

Play a role in spermiogenesis and fertilization.

Gene ID:

SPATA46

Uniprot

Q5T0L3

Synonyms:

Spermatogenesis-associated protein 46, SPATA46, C1orf111

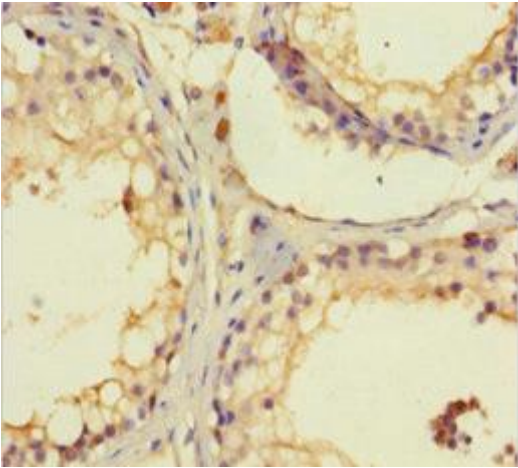
Immunogen:

Recombinant Human Spermatogenesis-associated protein 46 protein (31-261AA).

Storage:

Preservative: 0.03% Proclin 300. Constituents: 50% Glycerol, 0.01M PBS, PH 7.4

Product Images



Immunohistochemistry of paraffin-embedded human testis tissue using PACO36358 at dilution of 1:100.