

NAIF1 Antibody



PACO36346

Product Information

Size:

50ug

Reactivity:

Human, Mouse

Source:

Rabbit

Isotype:

IgG

Applications:

ELISA, WB, IHC

Recommended dilutions:

ELISA:1:2000-1:10000, WB:1:500-1:2000,
IHC:1:20-1:200

Protein Background:

Induces apoptosis.

Gene ID:

NAIF1

Uniprot

Q69YI7

Synonyms:

Nuclear apoptosis-inducing factor 1, NAIF1, C9orf90

Immunogen:

Recombinant Human Nuclear apoptosis-inducing factor 1 protein (1-172AA).

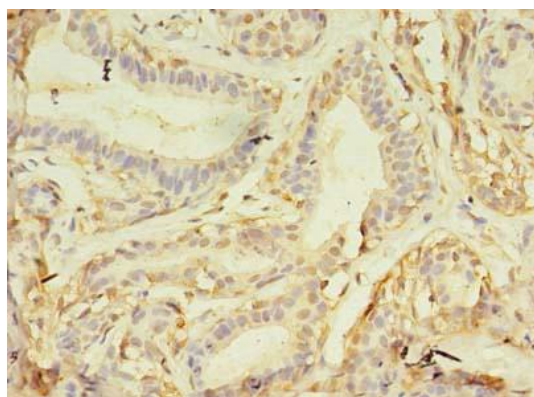
Storage:

Preservative: 0.03% Proclin 300. Constituents: 50% Glycerol, 0.01M PBS, PH 7.4

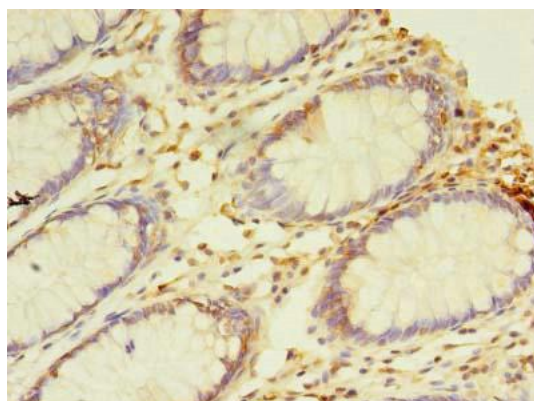
Product Images



Western blot. All lanes: NAIF1 antibody at 6 μ g/ml. Lane 1: Mouse brain tissue. Lane 2: Mouse heart tissue. Secondary: Goat polyclonal to rabbit IgG at 1/10000 dilution. Predicted band size: 36, 18 kDa. Observed band size: 36 kDa.



Immunohistochemistry of paraffin-embedded human breast cancer using PACO36346 at dilution of 1:100.



Immunohistochemistry of paraffin-embedded human colon cancer using PACO36346 at dilution of 1:100.